

MAGAIN



2A Egmont Terrace ERINDALE SA

4 2 2

This superbly positioned, solid brick family home offers a spacious floor plan perfect for a larger family.

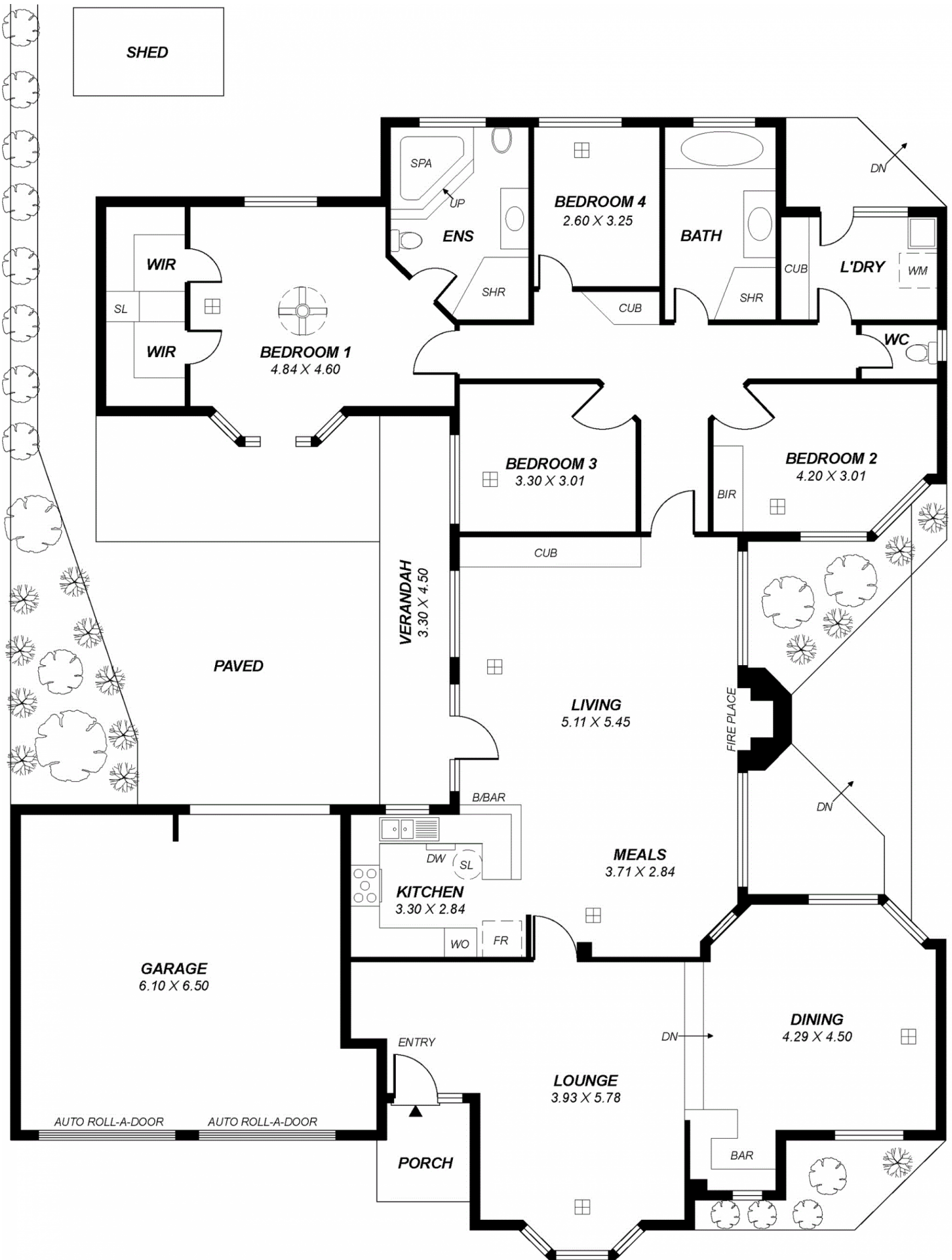
As you enter the home you are welcomed by a large formal living and dining with large picture windows overlooking the attractive front gardens. Ideal for those who love to entertain the sunken dining area features a servery and a good size plumbed bar. The solid timber kitchen offers gas cooking and is adjacent the huge open plan family room. The family room offers plenty of space for both casual living and dining and features a gas fire place and built in cupboards for additional storage. This large living space integrates well with both the paved patios providing excellent options for outdoor entertaining.

Type : House
Land Size : 643 sqm
View : <https://www.magain.com.au/property/2a-egmont-terrace-erindale-sa/8435915>

[For full version visit the website](https://www.magain.com.au)

<https://www.magain.com.au>
Magain Real Estate

457 Greenhill Road Tusmore SA
08 8332 1022



Area	m ²
Living	239.94
Garage	48.01
Verandah	30.08
Shed	5.65
Porch	3.92
Total	327.60

*This drawing is for illustration purposes only.
All measurements are approximate and details intended
to be relied upon should be independently verified.*