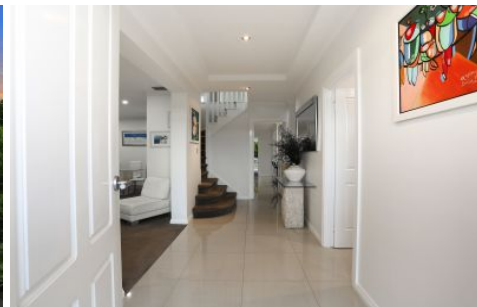


# MAGAIN



## 5 Roger Court ATHELSTONE SA

5 🏠 3 🚿 2 🚗

Situated on the high side of a quiet cul-de-sac adjacent the Athelstone Recreation Reserve this north facing home is superbly positioned.

Offering a flexible floor plan of generous proportions the home comprises 5 good size bedrooms plus a study off the formal entry perfect as a home office. The palatial master suite has an ensuite and walk in robe, bedrooms 2, 3 & 4 all have built in robes and bedroom 5 has a fitted walk in robe and recently upgraded ensuite.

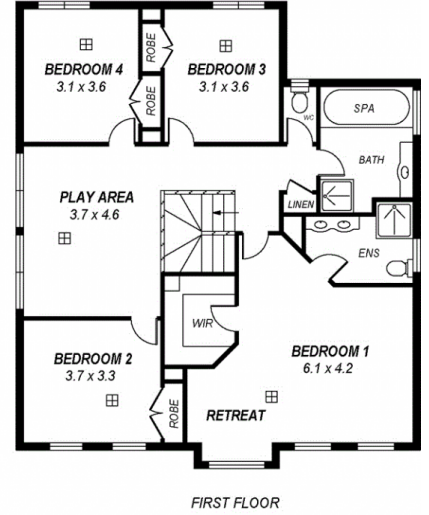
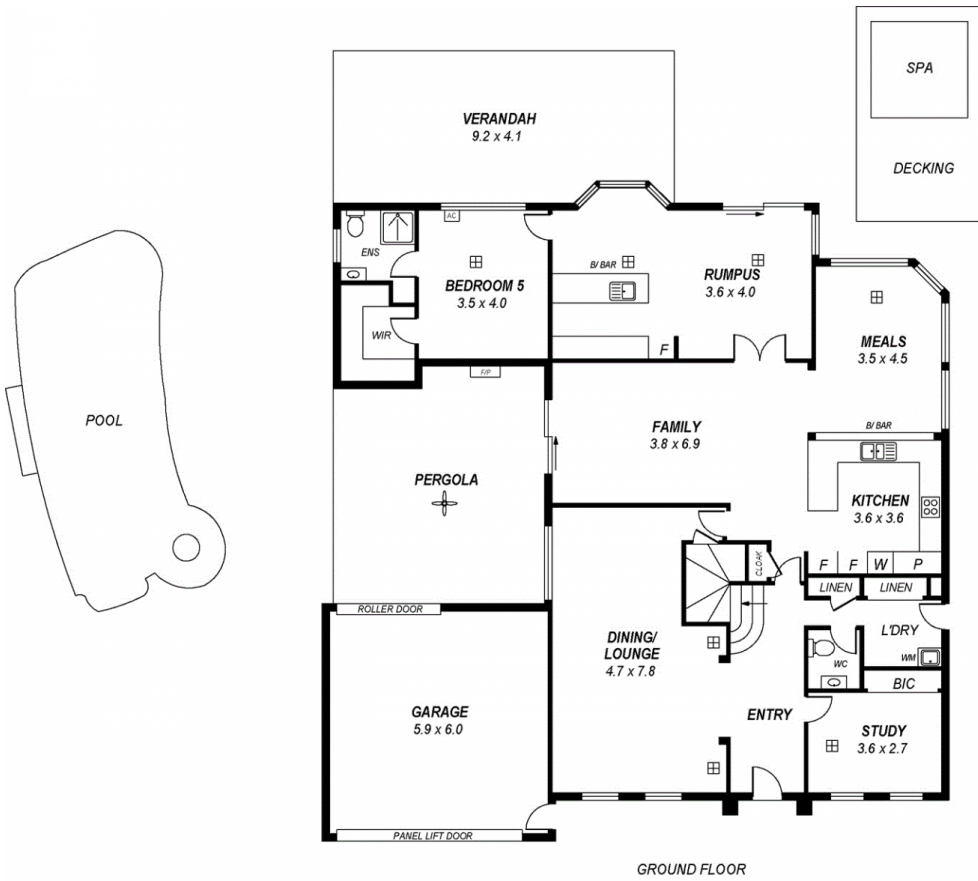
There are multiple living rooms including formal lounge and dining, casual meals area adjacent the state of the art kitchen, open plan family living, upstairs sitting room perfect as a kids play room and the rumpus room with a

**Type** : House  
**Land Size** : 847 sqm  
**View** : <https://www.magain.com.au/property/5-roger-court-athelstone-sa/8435918>

[For full version visit the website](https://www.magain.com.au)

<https://www.magain.com.au>  
Magain Real Estate

457 Greenhill Road Tusmore SA  
08 8332 1022



*This drawing is for illustration purposes only.  
 All measurements are approximate and details intended  
 to be relied upon should be independently verified.*

Area	M <sup>2</sup>
Living	328.2
Garage	38.4
<b>Total</b>	<b>366.6</b>