




# MAGAIN



47 Bevington Road GLENUNGA SA

3  2  2 

Superbly located on prestigious Bevington Road just a short stroll from excellent facilities including local shops and cafes as well as Burnside Village. Situated in the sought after Glenunga International High and Linden Park Primary School zones this is a fantastic opportunity to upgrade this substantial home to suit your own taste or redevelop subject to council consent.

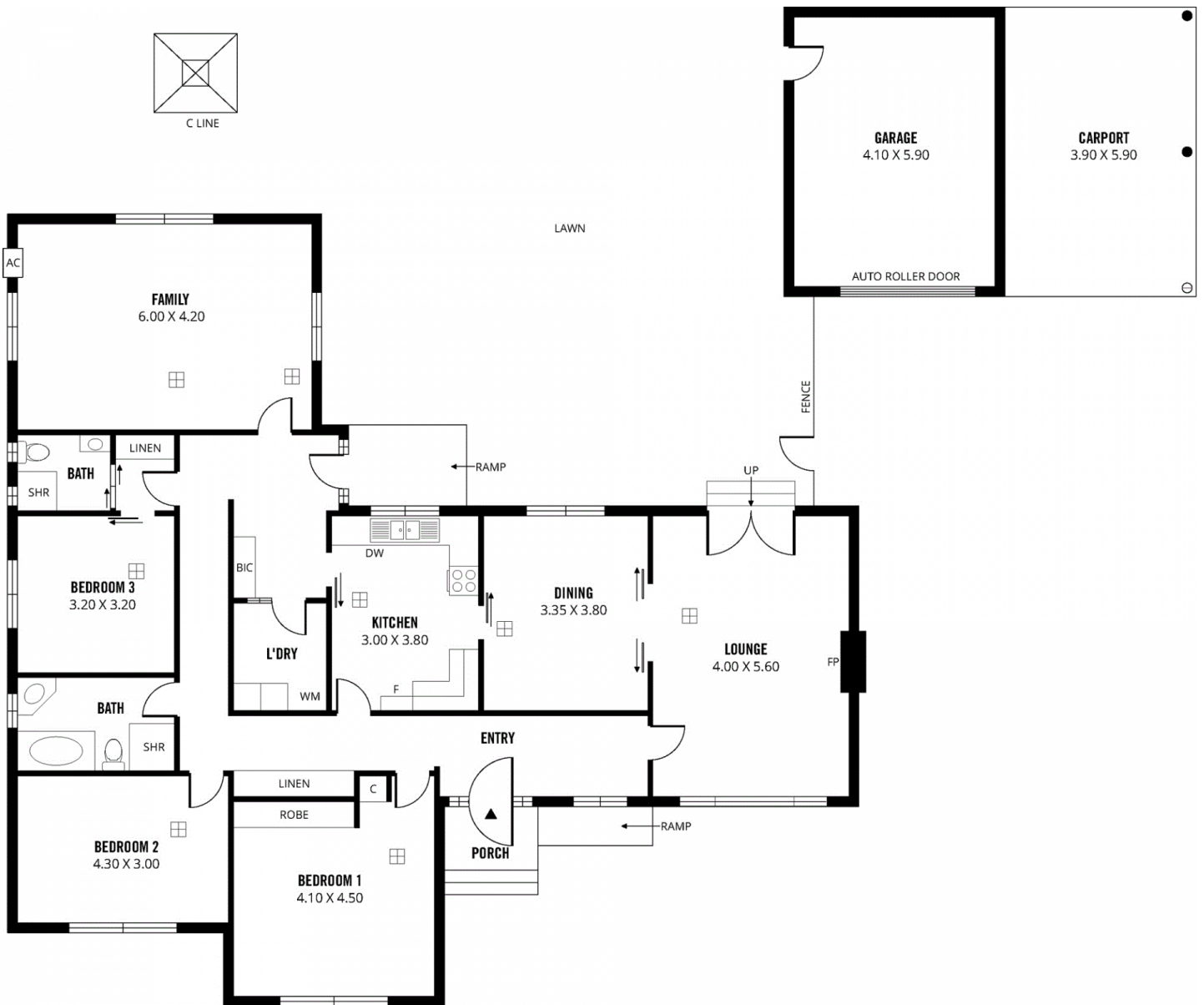
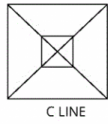
**Type** : House  
**Land Size** : 1187 sqm  
**View** : <https://www.magain.com.au/property/47-bevington-road-glenunga-sa/8435924>

Inside the home comprises formal entry, 3 double bedrooms, lounge room with French doors leading to the attractive rear garden, separate dining, large eat in kitchen with Miele dishwasher, huge family room, 2 bathrooms and separate laundry with built ins. Other features include Daikin ducted reverse cycle air conditioning, an open fireplace, built in robes and plenty of storage.

[For full version visit the website](https://www.magain.com.au)

<https://www.magain.com.au>  
Magain Real Estate

457 Greenhill Road Tusmore SA  
08 8332 1022



**229m<sup>2</sup>**

**TOTAL**

175m<sup>2</sup>

Living

23m<sup>2</sup>

Carport

5m<sup>2</sup>

Porch

26m<sup>2</sup>

Garage

Scale in metres. This drawing is for illustration purposes only. All measurements are approximate and details intended to be relied upon should be independently verified.

Produced by **The Fotobase Group**