




MAGAIN



10 Simpson Road WATTLE PARK SA

4  2  2 

Set in one of Adelaide's sought after leafy eastern suburbs, this much loved family home is situated on approximately 769 square metres. Immaculately presented with attractive front and rear gardens this solid brick home offers an excellent floor plan with spacious accommodation throughout.

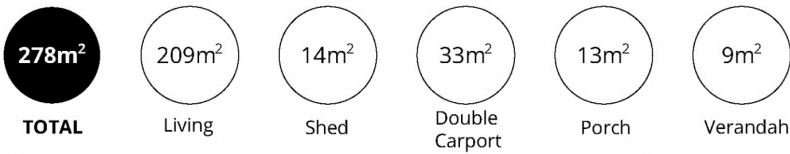
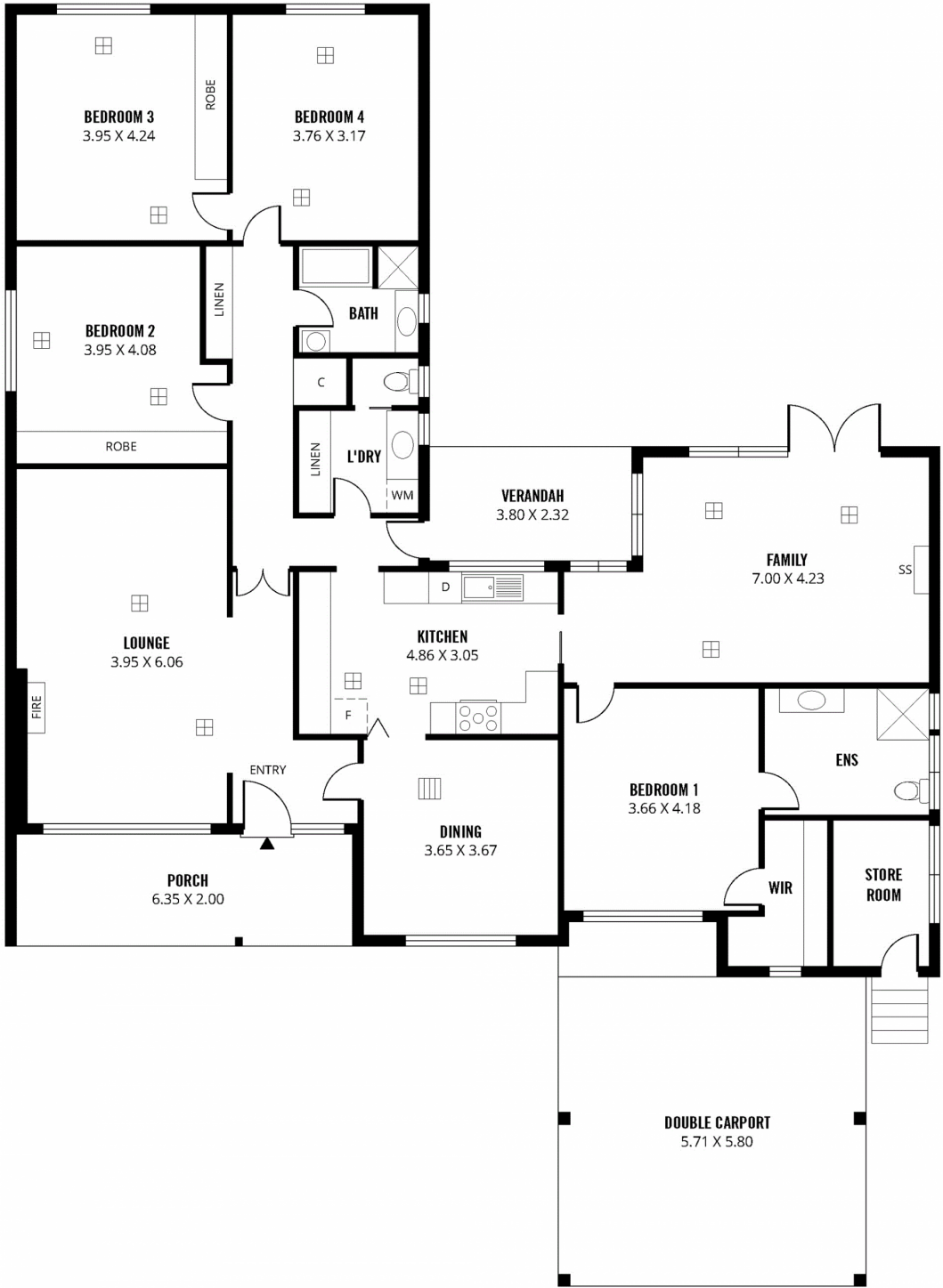
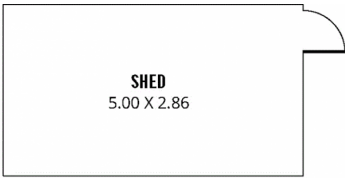
Type : House
Land Size : 769 sqm
View : <https://www.magain.com.au/property/10-simpson-road-wattle-park-sa/8435929>

Inside the home comprises a formal entry, 4 genuine double bedrooms, the main with a large walk in robe and ensuite, good size living room with an appealing stone feature fireplace, separate dining with floor cellar adjacent the stunning gourmet kitchen with Caesar stone bench tops, SMEG and Miele appliances, light filled family room with large picture windows and French doors leading to the paved patio area, attractive main bathroom and a separate

[For full version visit the website](https://www.magain.com.au)

<https://www.magain.com.au>
Magain Real Estate

457 Greenhill Road Tusmore SA
08 8332 1022



Scale in metres. This drawing is for illustration purposes only. All measurements are approximate and details intended to be relied upon should be independently verified.