

MAGAIN



Unit 3/10 The Avenue ATHOL PARK SA

3  1  1 

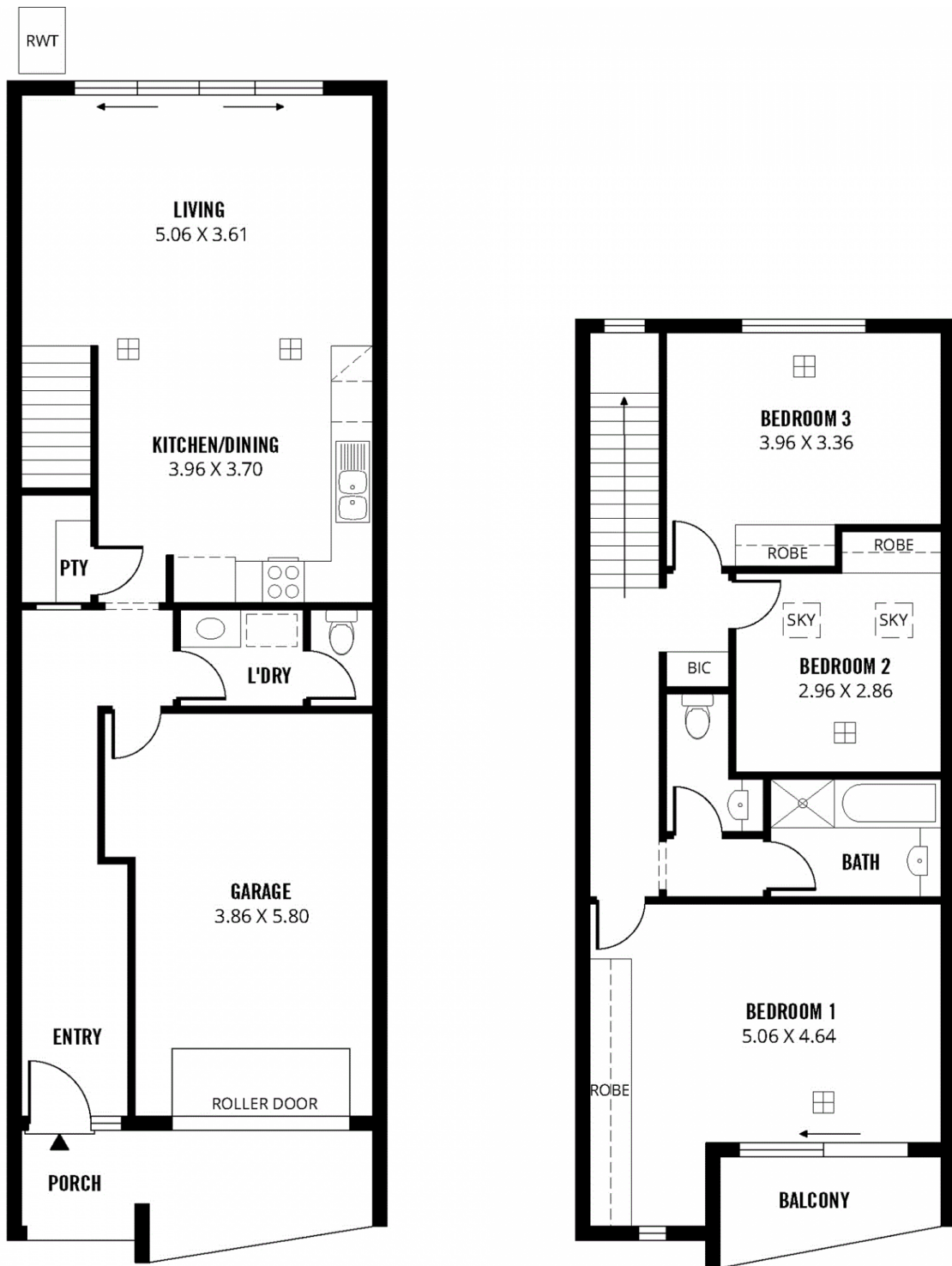
With a fresh new interior look, immaculate presentation and a convenient location, this property represents excellent buying. You'll enjoy the benefits of being surrounded by other smart homes within an up and coming area which is near to outstanding reserves and excellent local shopping.

Cleverly built over two levels and comprising of three good sized bedrooms (each with built-in robes and the large master with its own private balcony), generous open plan family living with sliding doors that lead onto a paved patio, a modern kitchen with stainless steel appliances including a dishwasher, an attractive bathroom with a full bath and shower, a separate laundry and handy second lavatory.

Features include ducted reverse cycle air-conditioning

[For full version visit the website](#)

Type : Townhouse
Land Size : 205 sqm
View : <https://www.magain.com.au/property/unit-31-0-the-avenue-athol-park-sa/8435935>



161m²

TOTAL

127m²

Living

4m²

Balcony

22m²

Garage

8m²

Porch

Scale in metres. This drawing is for illustration purposes only. All measurements are approximate and details intended to be relied upon should be independently verified.

Produced by **The Fotobase Group**