




MAGAIN



7 Ebenezer Place GUMERACHA SA

4  2  2 

Located in Gumerachas prestigious Kenton Hill Estate, this beautiful, large and modern home is a must see. Situated only 20 minutes drive from Tea Tree Plaza, this property offers the best of both worlds; being close enough to the CBD yet offering a relaxed country lifestyle with views.

Type : House

View : <https://www.magain.com.au/property/7-ebenezer-place-gumeracha-sa/8435938>

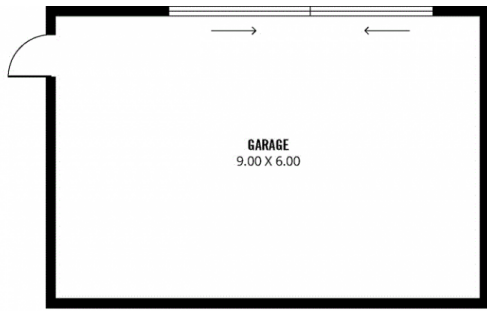
Built on a generous 926sqm allotment, the home is immaculately maintained with huge open plan living areas that lead to a great sized polished concrete balcony, where you can sit and enjoy the blend of indoor/outdoor living while taking in the country views across the Gumeracha Township and beyond.

The home offers 4 spacious bedrooms and a study/nursery. All bedrooms are complete with built in

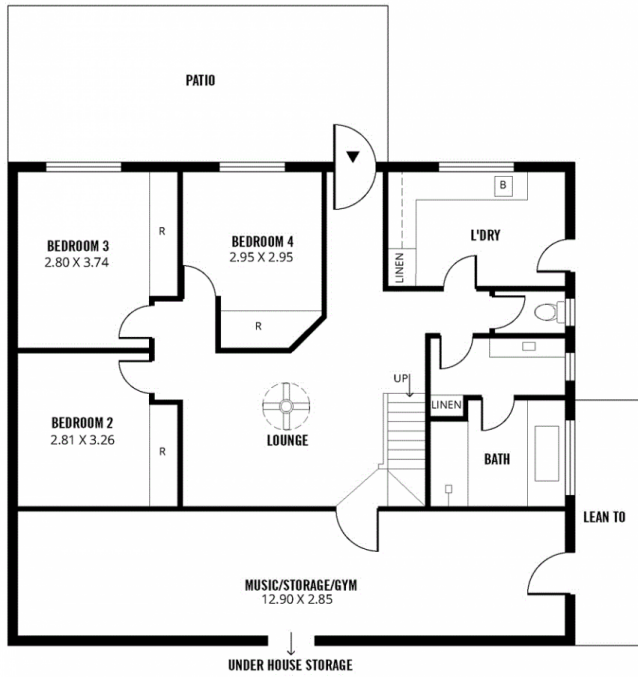
[For full version visit the website](#)

<https://www.magain.com.au>
Magain Real Estate

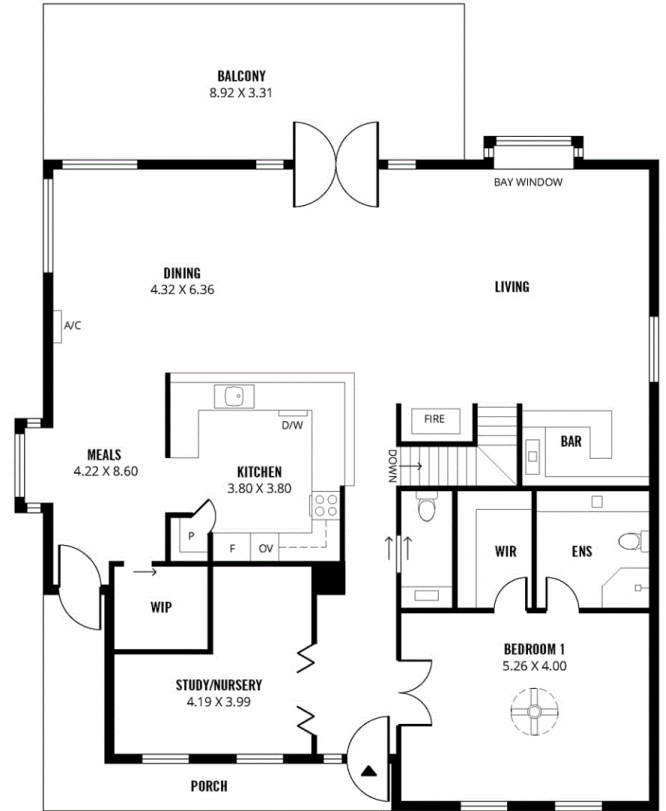
457 Greenhill Road Tusmore SA
08 8332 1022



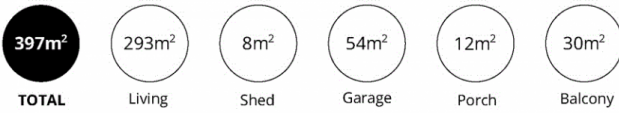
(NOT IN POSITION)



LOWER LEVEL



GROUND LEVEL



Scale in metres. This drawing is for illustration purposes only. All measurements are approximate and details intended to be relied upon should be independently verified.

Produced by The Fotobase Group