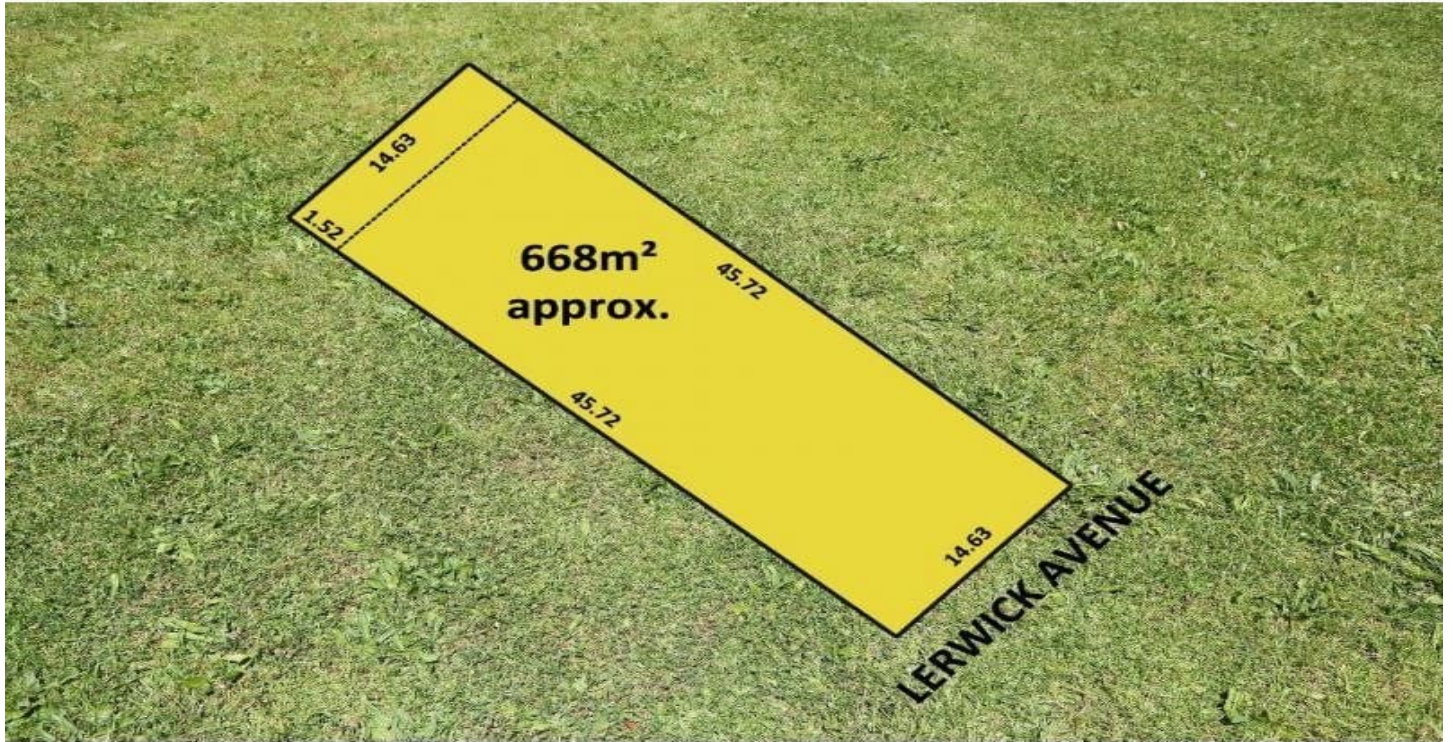


MAGAIN



L44 Lerwick Avenue HAZELWOOD PARK SA

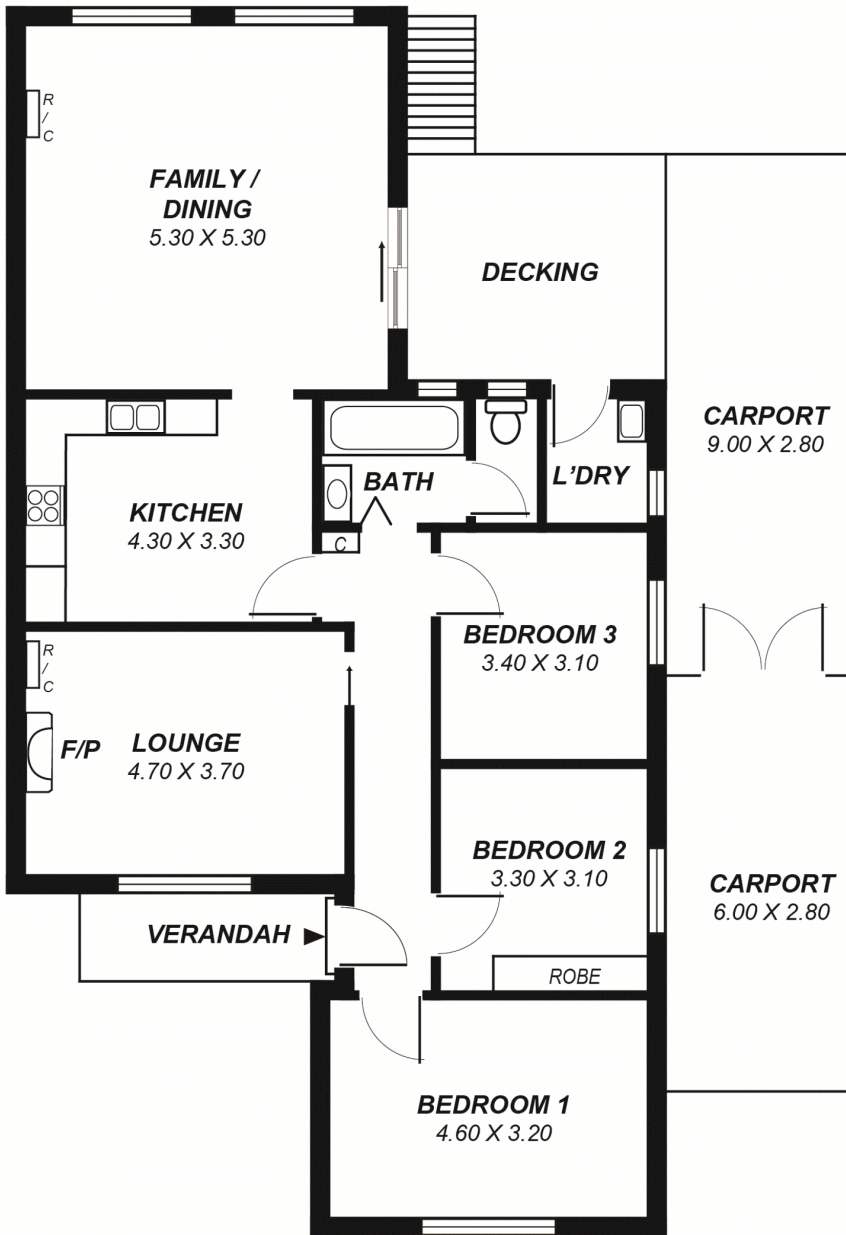
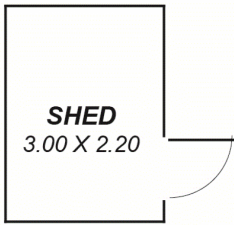
Beautifully positioned just half a block from popular Wood Park & playground this neatly presented, solid brick, stone fronted home offers 3 bedrooms, formal lounge or potential 4th bedroom, spacious family room, reverse cycle air conditioning, attractive polished floorboards, recently upgraded kitchen, outdoor entertaining area & undercover parking for 3 cars.

Situated on approximately 668 square metres in the Linden Park Primary School and Glenunga International High School zones this is a great opportunity to further improve the existing home or build in this desirable location (subject to council consent).

Auction: Saturday 21st March at 3pm (unless sold prior).

[For full version visit the website](https://www.magain.com.au/property/l44-lerwick-avenue-hazelwood-park-sa/8435944)

Type : Land
Price : \$ 640,000
Land Size : 668 sqm
View : <https://www.magain.com.au/property/l44-lerwick-avenue-hazelwood-park-sa/8435944>



*This drawing is for illustration purposes only .
All measurements are approximate and details intended
to be relied upon should be independently verified.*