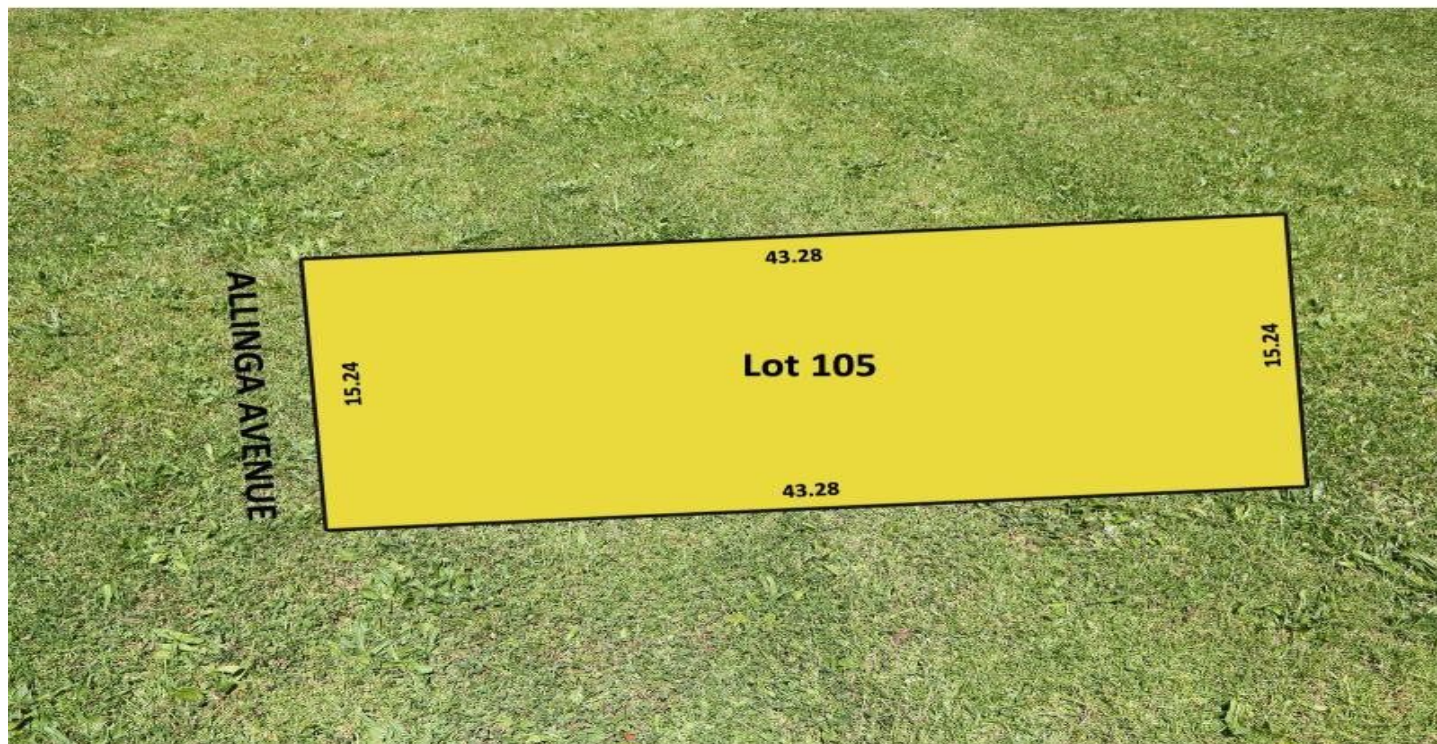


MAGAIN



L105 Allinga Avenue GLENSIDE SA

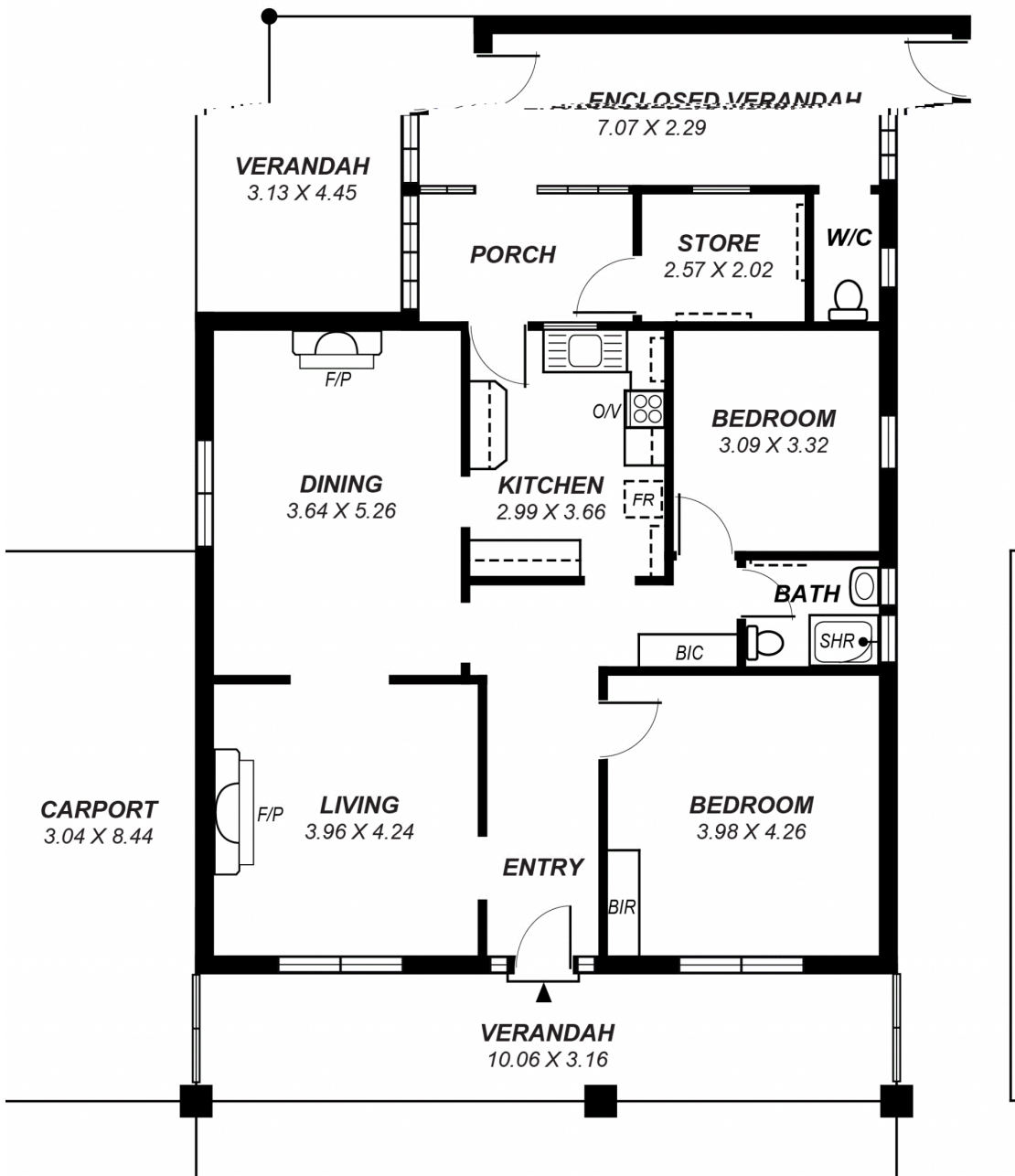
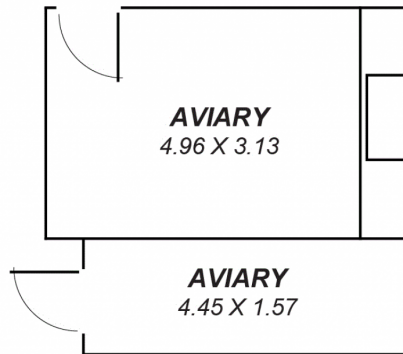
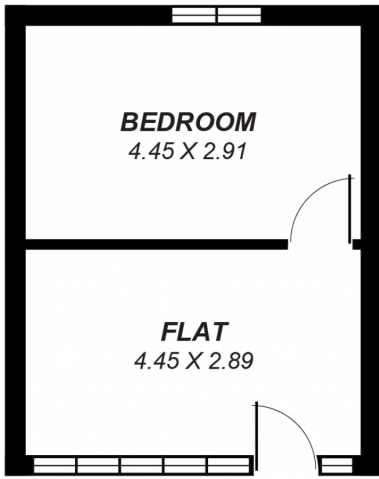
Superbly positioned allotment of approximately 659 square metres with a good frontage of approximately 15.24 metres providing an outstanding opportunity to build to your requirements subject to council consent. Only minutes from the CBD and a couple of blocks walk from the popular shops and cafes of The Village the exceptional local facilities offer an enviable lifestyle.

Located in the highly sought after Linden Park Primary and Glenunga International High School zones this is the perfect spot for your family home.

Auction: Saturday 6th June 2015 at 10am (unless sold prior).

Type : Land
Land Size : 659 sqm
View : <https://www.magain.com.au/property/l105-alinga-avenue-glenside-sa/8435949>

[For full version visit the website](https://www.magain.com.au)



*This drawing is for illustration purposes only .
 All measurements are approximate and details intended
 to be relied upon should be independently verified.*

*T
 A
 tc*