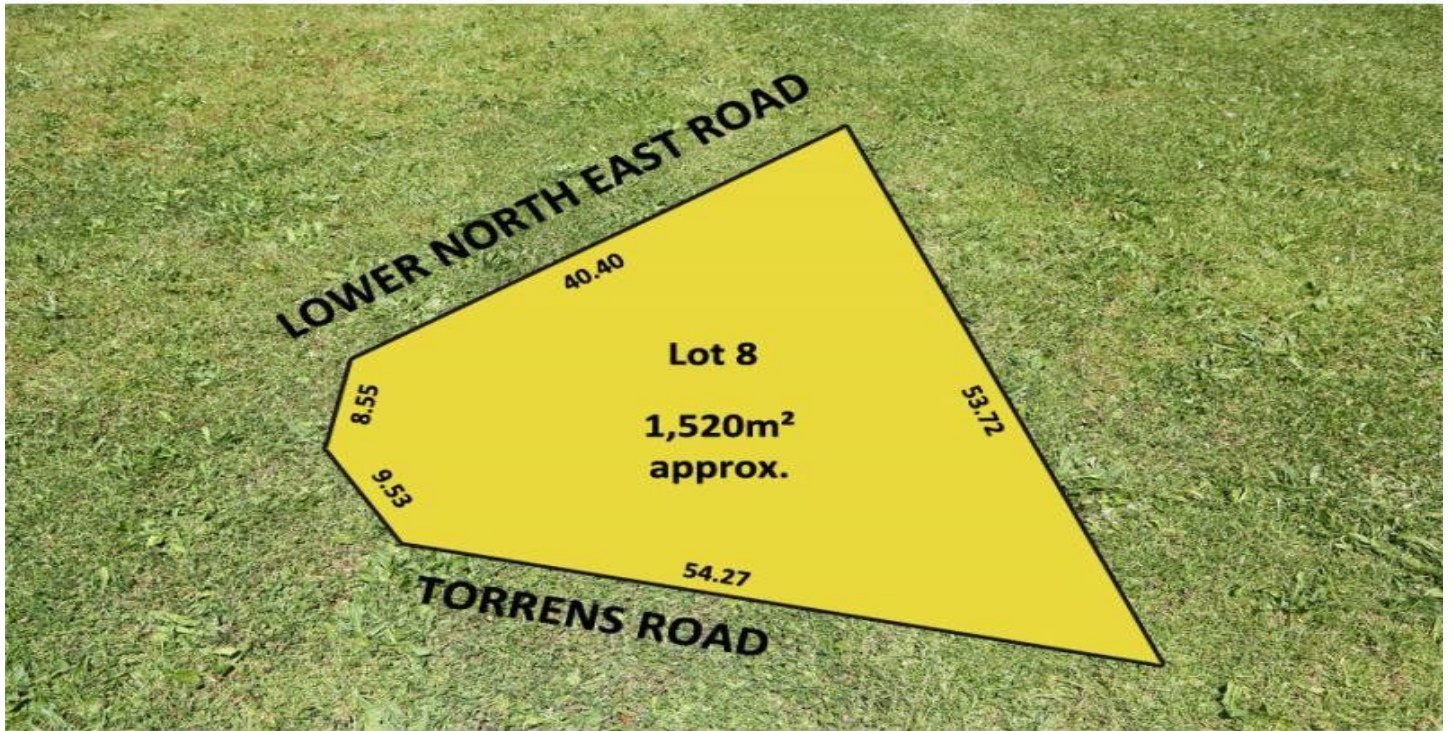


MAGAIN



L8 Lower North East Road HIGHBURY SA

This unique parcel of land, situated on a corner position, offers a terrific opportunity for the developer looking to build their portfolio in a great area. Subject to normal council consents, there is scope for a variety of plans, given the size of the block.

The house itself is in great condition and features 3-4 bedrooms, neat bathroom, 2 spacious living areas, heating and cooling, and a large balcony with views of the foot hills, providing plenty of scope to receive rental income whilst planning the development.

A great offering is a superb location. This is a rare chance not to be missed.

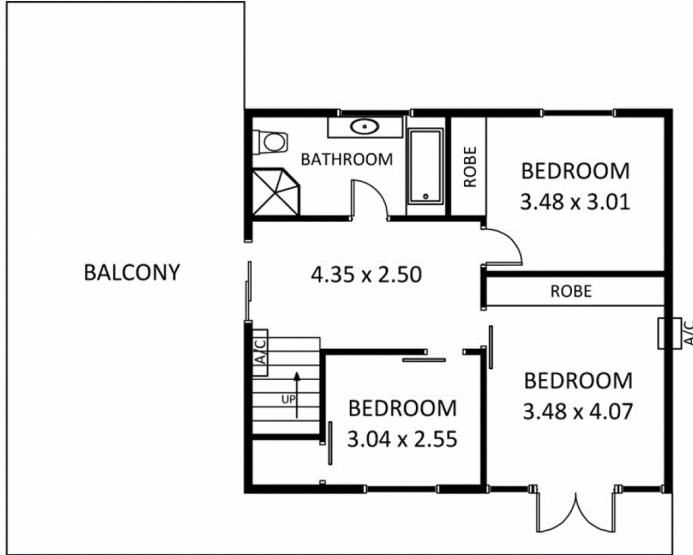
Type : Land
Land Size : 1500 sqm
View : <https://www.magain.com.au/property/l8-lower-north-east-road-highbury-sa/8435952>

[For full version visit the website](https://www.magain.com.au)

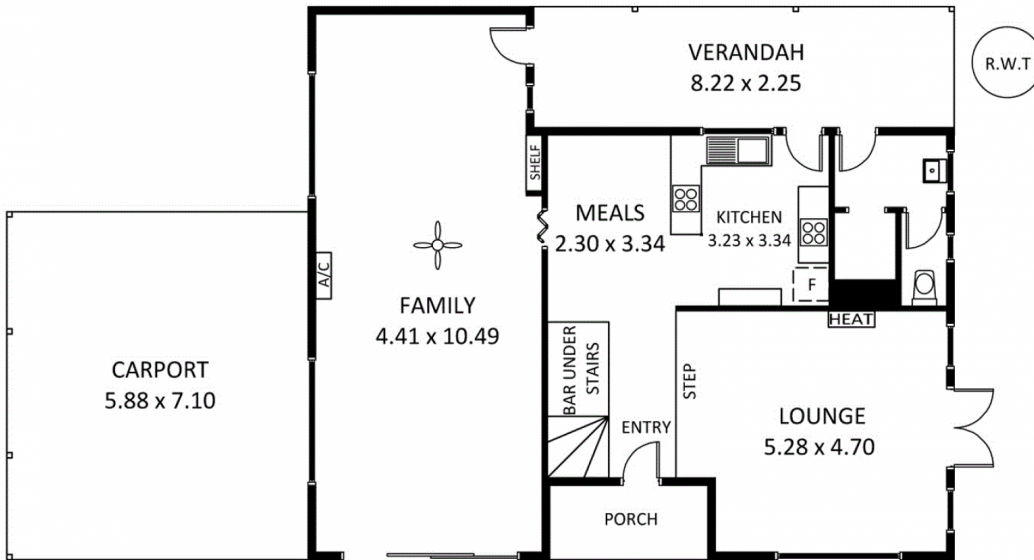
HIGHBURY

1132 Lower North East Road

This drawing is for illustrative purposes only.
All measurements are approximate and details intended
to be relied upon should be independently verified.



UPPER LEVEL



LOWER LEVEL

