

MAGAIN



L472 Glynburn Road BEAUMONT SA

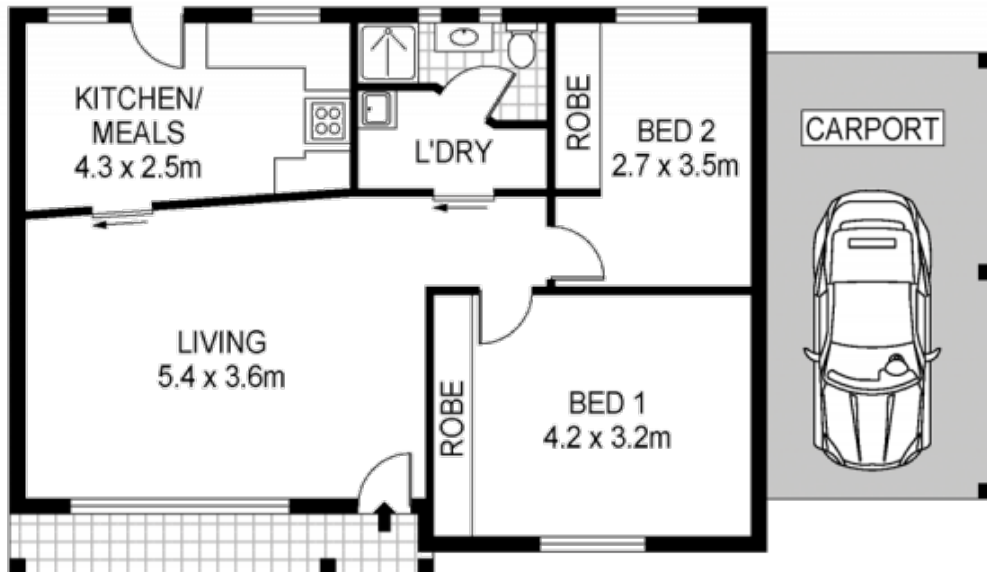
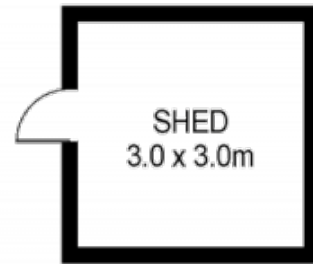
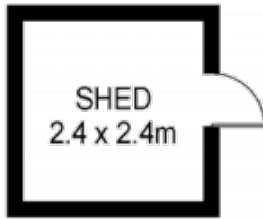
Situated on the high side of the street at the top of Glynburn Road this is an excellent opportunity to create your dream home and take full advantage of the spectacular view particularly from a second storey (subject to council consent).

Currently comprising a 2 bedroom colonial style home on an appealing split level block of approximately 698 square metres. Close to popular walking trails, cafes, local shops and also within the Glenunga International School zone this is a great spot in this sought after Eastern suburb.

Offers Close Tuesday 25th August at 5pm (unless sold prior).

Type : Land
Land Size : 698 sqm
View : <https://www.magain.com.au/property/l472-glynburn-road-beaumont-sa/8435955>

[For full version visit the website](https://www.magain.com.au)



Scale in metres. Indicative only. Dimensions are approximate. All information contained herein is gathered from sources we believe to be reliable. However we cannot guarantee its accuracy and interested persons should rely on their own enquiries

INT : 63m²

614 Glynburn Road, Beaumont