

# MAGAIN



3/18 Tarpeena Avenue Windsor Gardens SA

2  1  1 

Please contact Matt Scarce from Magain Real Estate for all your property advice.

Located just minutes from Pitman Park Playground and the Linear Reserve, this well presented, single storey unit is situated in a small group of three and has it's own street frontage.

Offering generous accommodation, the property comprises of two good size bedrooms, spacious open plan living and dining with attractive polished floorboards, near new split system air-conditioning, a neat kitchen with an upgraded Chef oven, an appealing bathroom with modern upgrades and laundry facilities.

**Type** : Unit  
**Land Size** : 295 sqm  
**View** : <https://www.magain.com.au/property/318-tarpeena-avenue-windsor-gardens-sa/8436041>

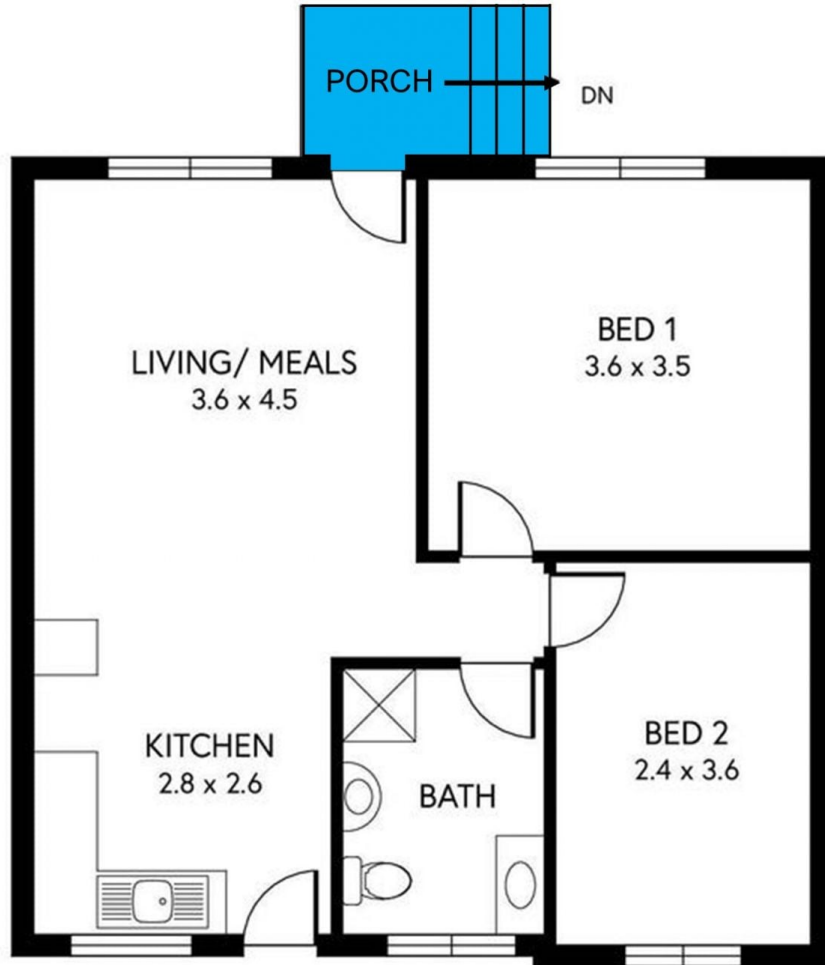


**Matt Scarce**  
08 8151 2356

[For full version visit the website](https://www.magain.com.au)

<https://www.magain.com.au>  
Magain Real Estate

457 Greenhill Road Tusmore SA  
08 8332 1022



3/18 TARPEENA AVENUE, WINDSOR GARDENS

	INTERNAL	- 58.0 SQM
	EXTERNAL	- 6.3 SQM
	TOTAL	- 64.3 SQM

Scale in metres. This drawing is for illustration purposes only. All measurements are approximate and details intended to be relied upon should be independently verified.