

MAGAIN



61 Mariner Drive Sheidow Park SA

3 1 1

Perfect for young & growing families, or downsizers looking to move away from a larger high maintenance block, this updated modern home is sure to appeal to a range of buyers. Offering good space both inside & out, this attractive home offers the lucky new owners a usable & spacious floor plan in the heart of this popular location.

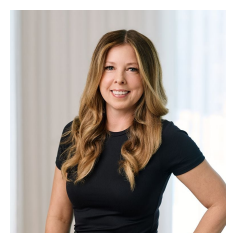
The super functional floor plan features three good size bedrooms, all with robes & ceiling fans, plus master with bay window and plantation shutters, walk in robe & ensuite access to the two way bathroom. Plus there are roller shutters on bedrooms 2 & 3. To the rear of the home is the large open plan family & meals area, with floating timber floors and split system with heating/air conditioning, plus there are the beautiful views over the timber deck & out

Type : House
Price : \$ 620,000
Building Size : 128 sqm
Land Size : 560 sqm
View : <https://www.magain.com.au/property/61-mariner-drive-sheidow-park-sa/8436115>

[For full version visit the website](#)



Sam Raven
08 8381 6000



Zoe Ball
08 8381 6000

<https://www.magain.com.au>
Magain Real Estate

Shop 15, Woodcroft Market Plaza, 217 Pimpala Road W
08 8381 6000

