

# MAGAIN



203/42 Mab Circuit Tonsley SA

2  1  1 

Please contact Andrew Boswell for further details.

Ideally located in the Tonsley Village and only a stones throw to newly established businesses and TafeSA / UniSA, this thriving and popular suburb is central to all your needs. Flinders Medical Centre, beaches, the hills and the southern vales all within close proximity as well.

Built in 2019, large apartment living with secure access via intercom and garaged single park with storage. Elevator to your floor and entry into your apartment which is light and bright. Very spacious internally with open plan living and galley kitchen complete with dishwasher. Two bedrooms, both with robes and master with balcony access (door access also off living room). Modern main bathroom

[For full version visit the website](https://www.magain.com.au/property/20342-mab-circuit-tonsley-sa/8436121)

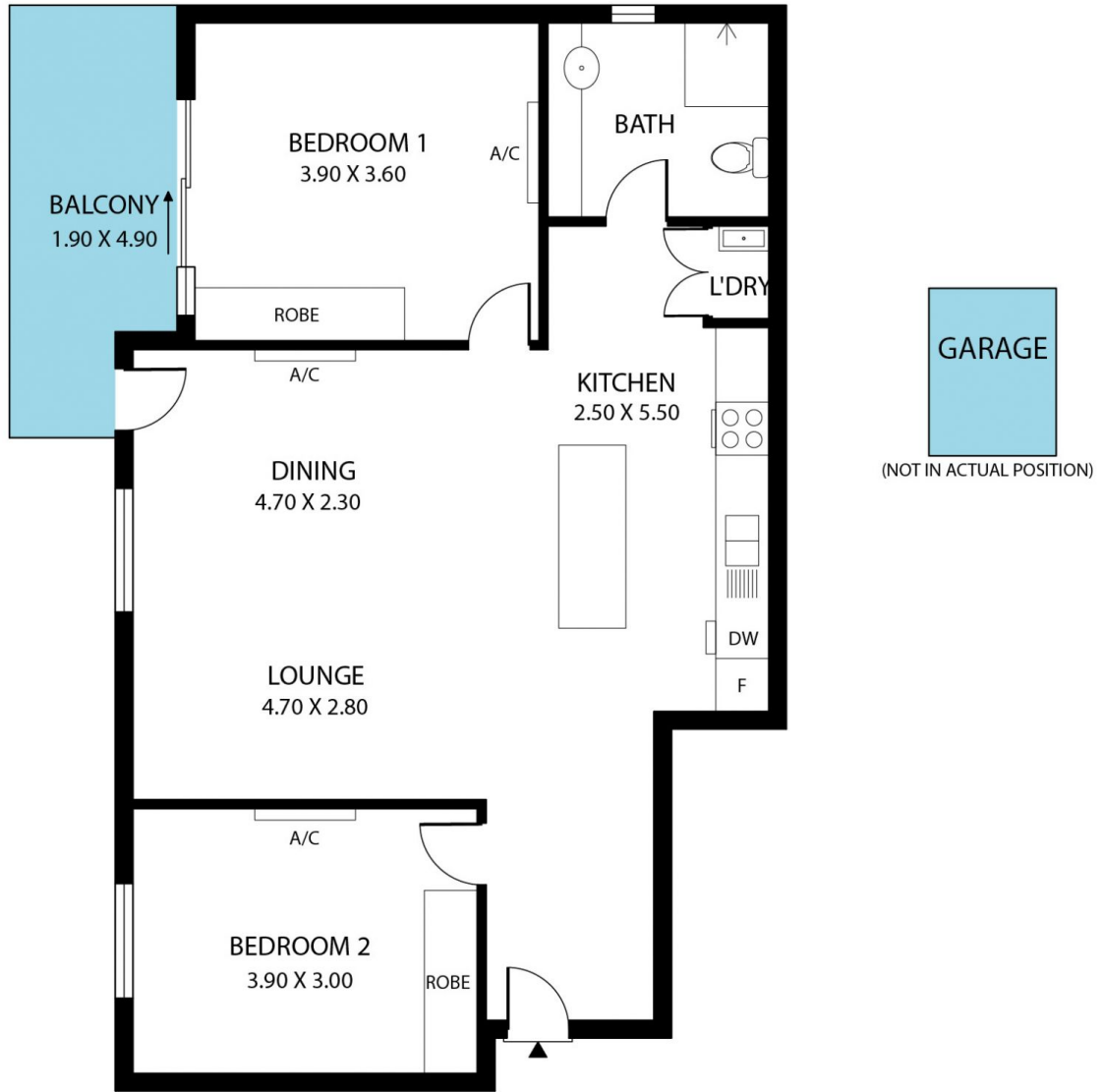
**Type** : Apartment  
**Price** : \$ 405,000  
**Building Size** : 88 sqm  
**View** : <https://www.magain.com.au/property/20342-mab-circuit-tonsley-sa/8436121>



**Andrew Boswell**  
08 8381 6000

<https://www.magain.com.au>  
Magain Real Estate

Shop 15, Woodcroft Market Plaza, 217 Pimpala Road W  
08 8381 6000



Scale in metres. This drawing is for illustration purposes only. All measurements are approximate and details intended to be relied upon should be independently verified.

Produced by **The Fotobase Group**