

MAGAIN



24 Highway Drive Morphett Vale SA

4 🛏 2 🚿 4 🚗

This beautifully presented family home has a lovely outlook, with a reserve just across the street. Space is such a bonus here. A luxurious master suite with new ensuite has been added to the home by way of a large extension. There's also a fabulous fully finished detached rumpus room which makes for a great second living area, office, gym, man cave or art studio.

This home is so neat and clean. It's quite obvious the moment you step inside, just how much love has been poured in over many years. Practical timber laminate floors and lush clean carpets, lots of storage everywhere you look, sparkling new bathrooms, with floor to ceiling tiles and roller shutters to the lounge, bedroom 2 and bedroom 3 windows. The solid timber kitchen features a stunning bay

Type : House
Price : \$ 615,000
Land Size : 697 sqm
View : <https://www.magain.com.au/property/24-highway-drive-morphett-vale-sa/8436131>

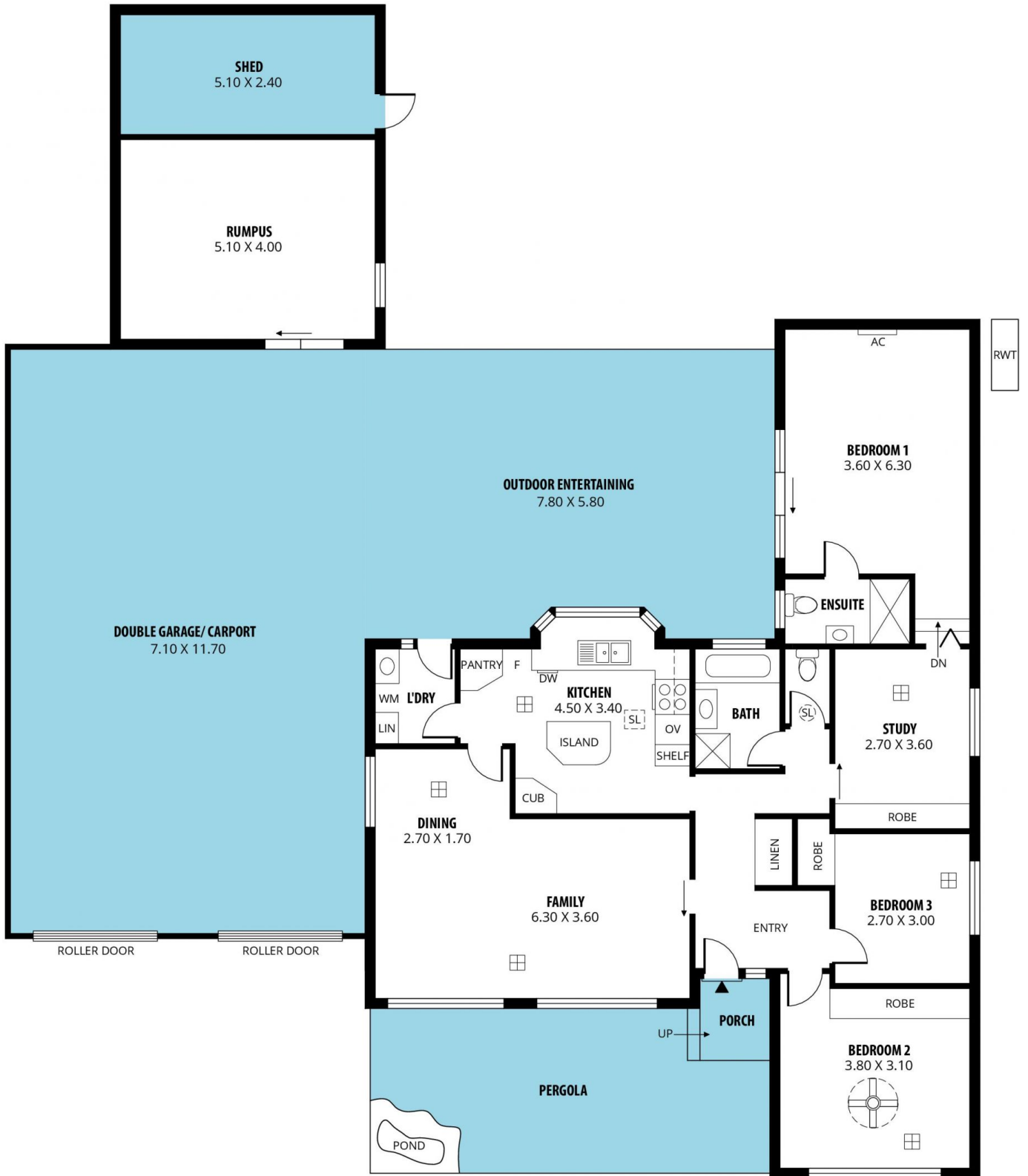


Scott McPharlin
08 8382 0029

[For full version visit the website](https://www.magain.com.au)

<https://www.magain.com.au>
Magain Real Estate

Shop 15, Woodcroft Market Plaza, 217 Pimpala Road W
08 8381 6000



Scale in metres. This drawing is for illustration purposes only. All measurements are approximate and details intended to be relied upon should be independently verified.

Produced by **The Fotobase Group**