

# MAGAIN



## 16 Warwick Grove Morphett Vale SA

3 1 1

Located close to shops and amenities, this well presented family home is sure to please. Sitting on a flat 690sqm block it offers plenty of space for growing families. From the updated kitchen to the entertaining areas this home boasts plenty of features to tick all the boxes.

The spacious floor plan offers three bedrooms, all with ceiling fans and bedroom 1 with built in robes and security shutters plus bedroom 3 with its own split system heating & cooling. To the front of the home is the formal lounge & dining room, finished with heating & cooling, floating floors, skylight, security shutters and timber doors on entry from the hallway. The kitchen has been updated and features gas cooking, filtered water tap and overhead cabinets for added storage. Down the hallway is the main bathroom,

[For full version visit the website](#)

**Type** : House  
**Price** : \$ 517,000  
**Building Size** : 98 sqm  
**Land Size** : 690 sqm  
**View** : <https://www.magain.com.au/property/16-warwick-grove-morphett-vale-sa/8436146>



**Zoe Ball**  
08 8381 6000



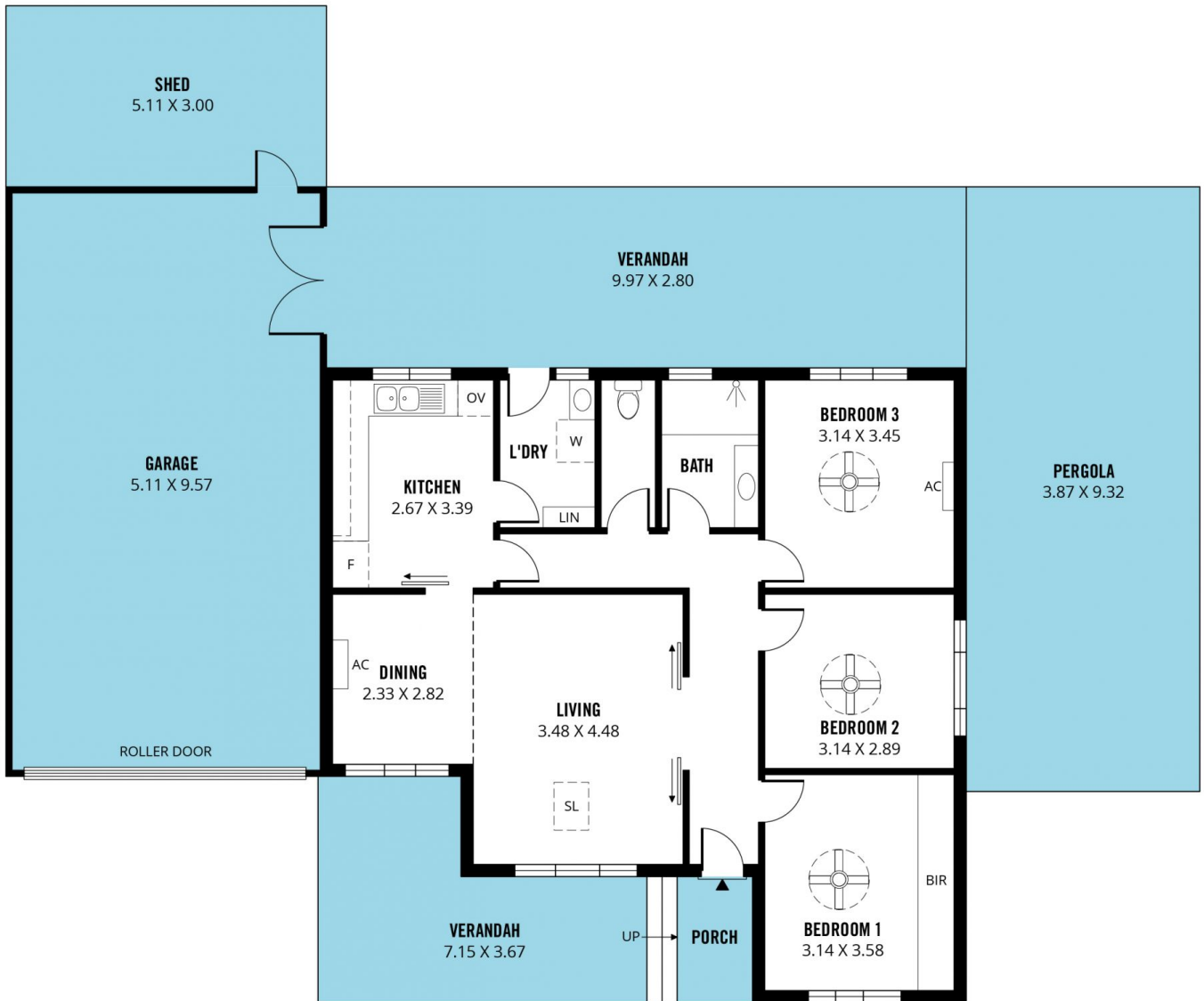
**Jemma Turner**  
08 8366 2220

<https://www.magain.com.au>  
Magain Real Estate

Shop 15, Woodcroft Market Plaza, 217 Pimpala Road W  
08 8381 6000

APPROX LOCATION

PERGOLA  
2.80 X 2.80



Scale in metres. This drawing is for illustration purposes only. All measurements are approximate and details intended to be relied upon should be independently verified.

Produced by **The Fotobase Group**