

# MAGAIN



5 Bede Street CHRISTIE DOWNS SA

3  1  1 

Call Scott McPharlin for viewing times.

Situated on a large 814sqm corner block close to shops, schools and transport, this neat and tidy 3 bedroom home provides the perfect opportunity for developers and first home buyers looking for a property with future development potential!

Upon entry, the functional floorplan makes the most of the space, with 3 good-sized bedrooms. The I-shaped living/dining has a large split system AC and leads through to a galley kitchen with plenty of storage and gas appliances. The home is easily serviced with a well maintained bathroom with separate toilet. The laundry leads out to a verandah overlooking the large backyard

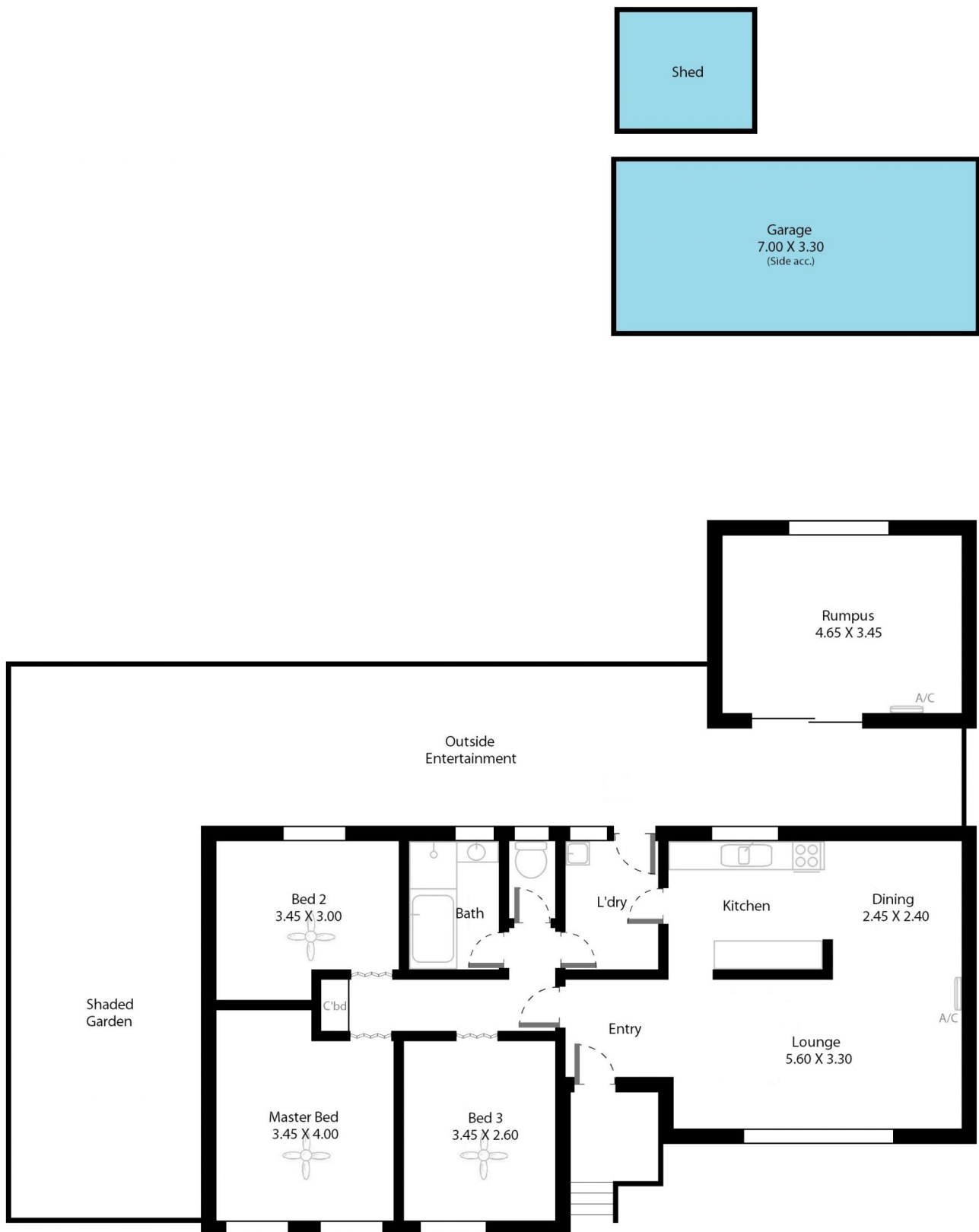
[For full version visit the website](https://www.magain.com.au/property/5-bede-street-christie-downs-sa/8436163)

**Type** : House  
**Building Size** : 11 sqm  
**Land Size** : 814 sqm  
**View** : <https://www.magain.com.au/property/5-bede-street-christie-downs-sa/8436163>



**Scott McPharlin**  
08 8382 0029

5 Bede Street Christies Downs, South Australia.



**Picture intended as a reference only.** Any specific measurements required should be obtained by an independent surveyor.