




MAGAIN



17/21 Cohen Court CLOVELLY PARK SA

3  1  1 

Contact Andrew Boswell for further details.

Ready made for the investor, this townhouse in this popular suburb has the hard work done and a tenant in place until August 2017.

In a nice quiet group, the property has a nice outlook over a park and play area. With a spacious formal lounge with heat/cool air conditioning and window roller shutters, renovated kitchen with dishwasher, meals area and bonus downstairs second toilet via the separate laundry. Also access to the private and lock up single carport, tool shed and entertaining area.

Upstairs we have the master complete with balcony overlooking the park, big mirrored robes and ceiling fan. Also bedroom 2 and 3 with ceiling fans and robes. Full main bathroom and also linen press on the landing.

Type : Townhouse

View : <https://www.magain.com.au/property/1721-cohen-court-clovelly-park-sa/8436173>



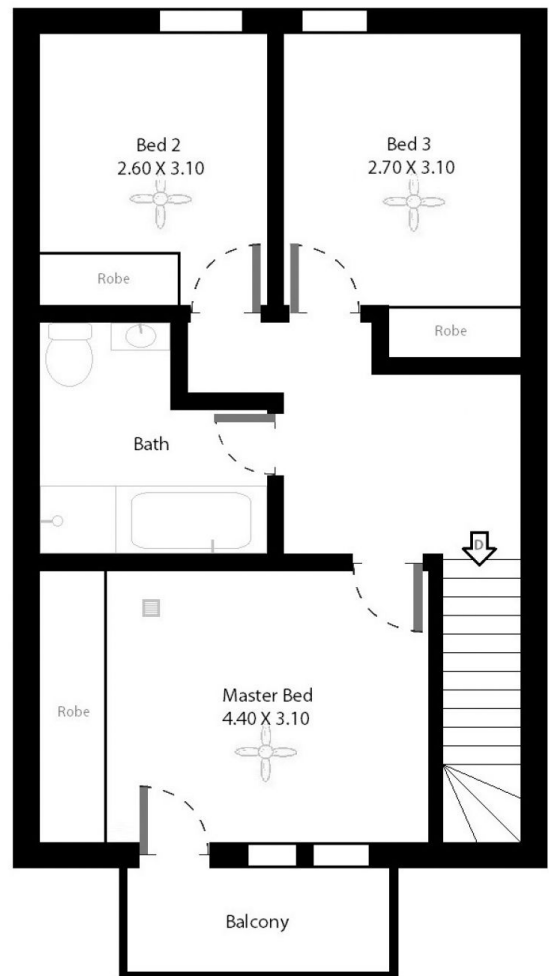
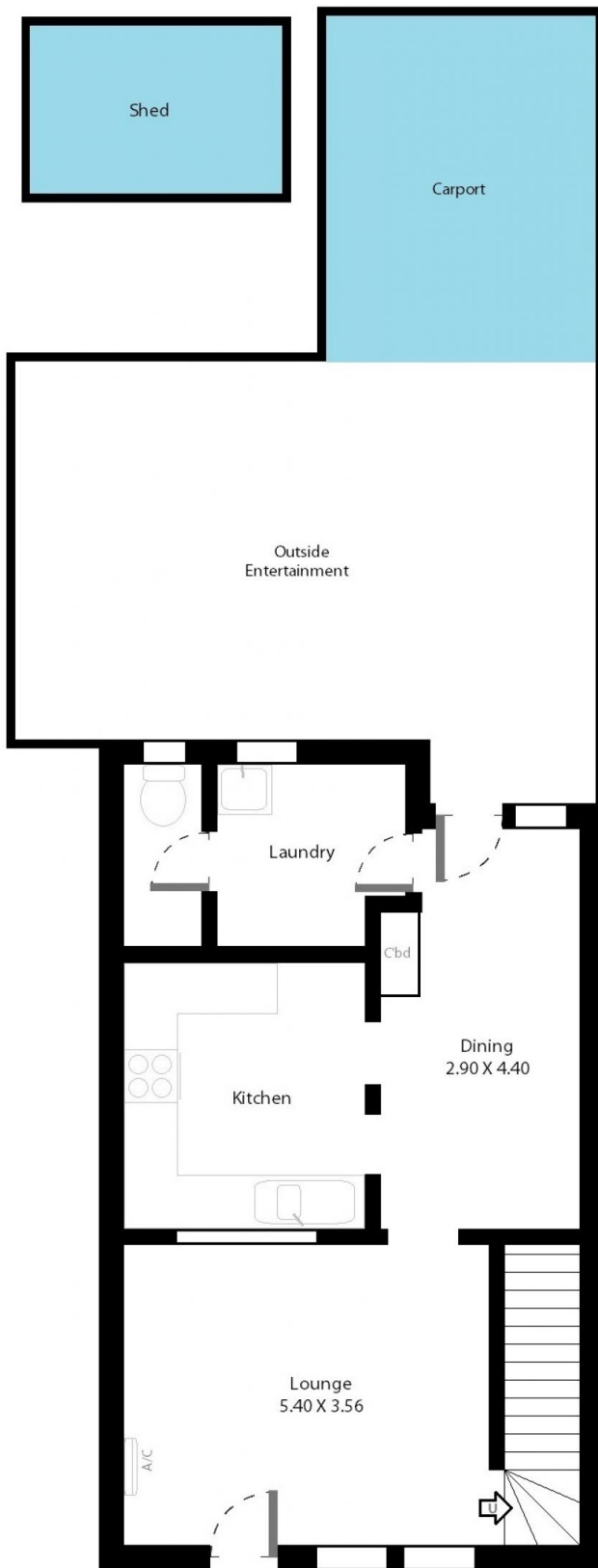
Andrew Boswell
08 8381 6000

[For full version visit the website](https://www.magain.com.au)

<https://www.magain.com.au>
Magain Real Estate

Shop 15, Woodcroft Market Plaza, 217 Pimpala Road W
08 8381 6000

Unit 17/21 Cohen Court Clovelly Park, South Australia.



Picture intended as a reference only. Any specific measurements required should be obtained by an independent surveyor.