

MAGAIN



1/31 Epstein Drive MORPHETT VALE SA

2 1 1

Call Scott McPharlin for viewing times.

If you are searching for a low maintenance unit in a fantastic location, look no further! Spacious and neat throughout, this unit would be perfect start for young professionals, a great option for downsizers or an ideal addition to an investors portfolio.

This unit has modern floating floors and downlights throughout the living area. This space leads through to a nice dining area together with the kitchen. The neat and tidy kitchen is well-fitted with dishwasher, pura tap, plenty of bench and storage space, and looks out to backyard.

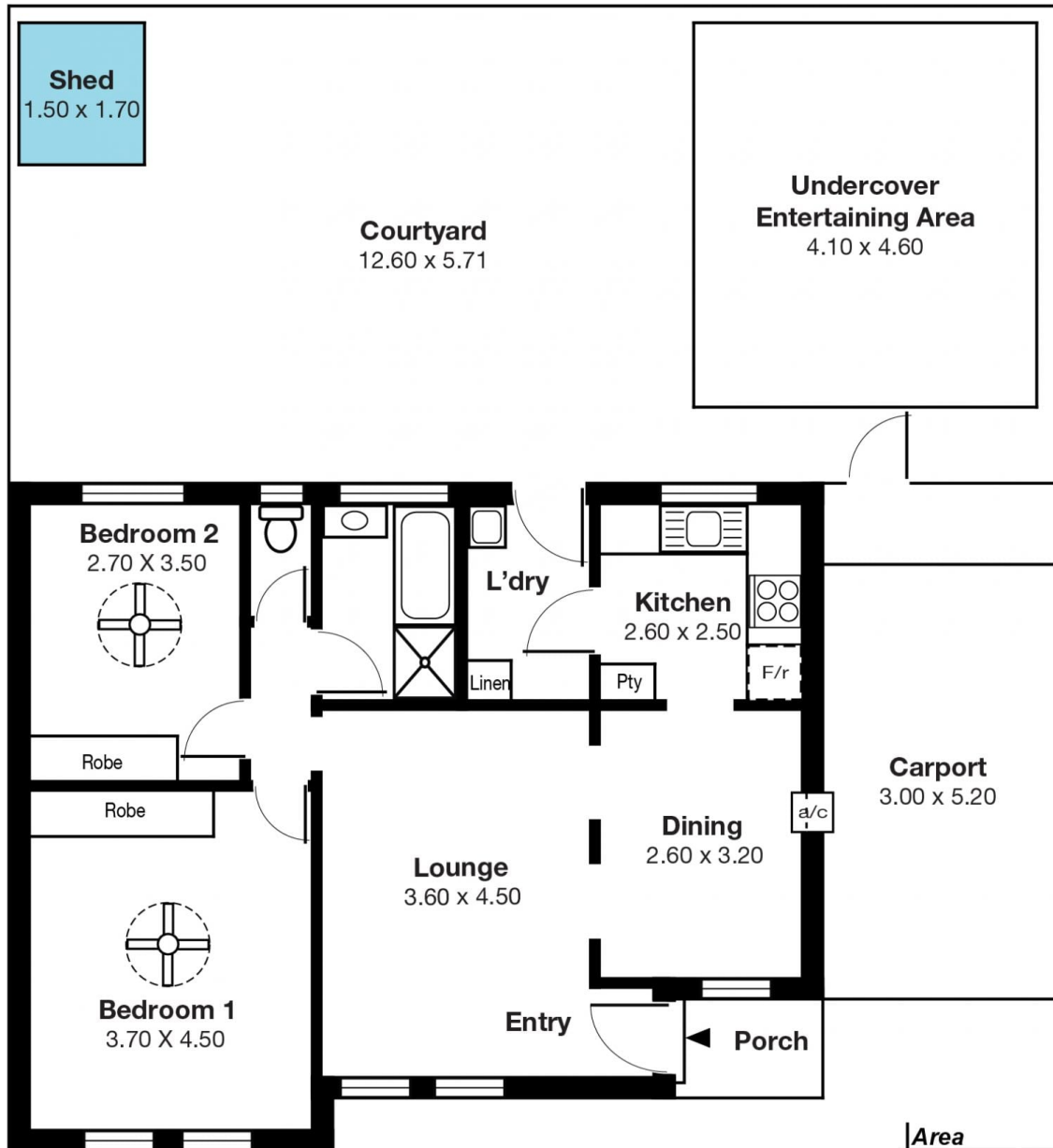
The 2 bedrooms are spacious and come complete with

[For full version visit the website](https://www.magain.com.au)

Type : House
Building Size : 8 sqm
View : <https://www.magain.com.au/property/13-1-epstein-drive-morphett-vale-sa/8436216>



Scott McPharlin
08 8382 0029



Area	m ²
Living:	70.53
Carport	15.60
Courtyard:	71.95
Total:	158.08