

MAGAIN



22/21 Cohen Court CLOVELLY PARK SA

3 1 1

Please contact Andrew Boswell for further details. Perfect starter or investment in this very popular location. Convenient to local shops, amenities and main transport, this townhouse represents fantastic value. At the front of the group with rear car access, we have on the ground floor a formal spacious lounge, large meals area and updated kitchen complete with dishwasher. Wooden look floors, separate laundry and bonus 2nd toilet. Access to your own rear yard with small and easy care lawned area and undercover single carport.

Upstairs we have three bedrooms, large master with air conditioning, balcony and a tree studded outlook. Also air conditioner to the second bedroom. Main bathroom servicing the upstairs. All freshly painted.

Great portfolio addition or to live in as ready to go and a

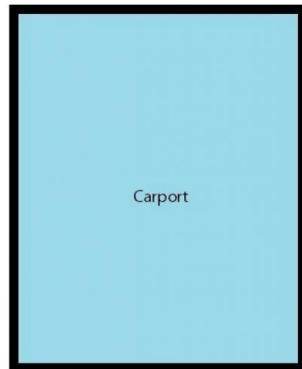
[For full version visit the website](https://www.magain.com.au/property/22-21-cohen-court-clovelly-park-sa/8436219)

Type : Townhouse
Building Size : 11 sqm
View : <https://www.magain.com.au/property/22-21-cohen-court-clovelly-park-sa/8436219>

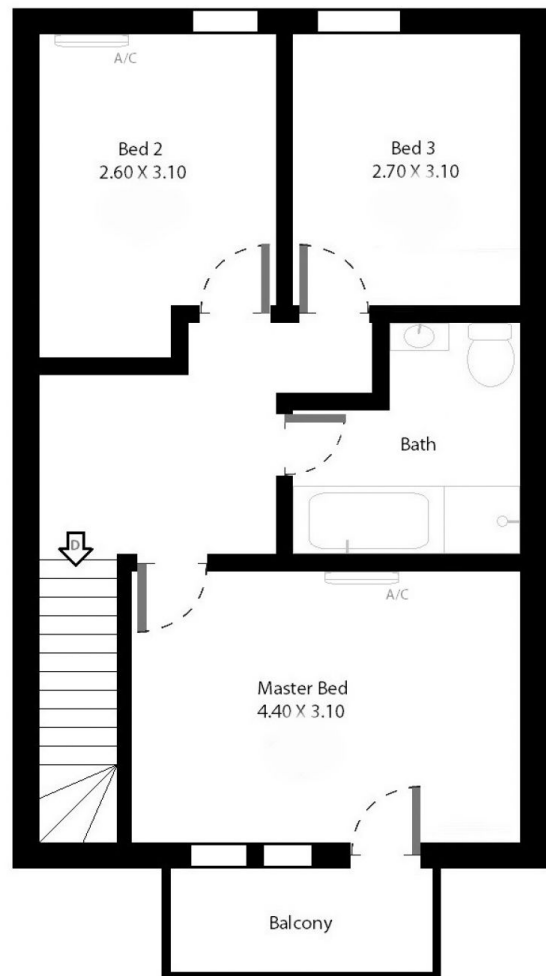
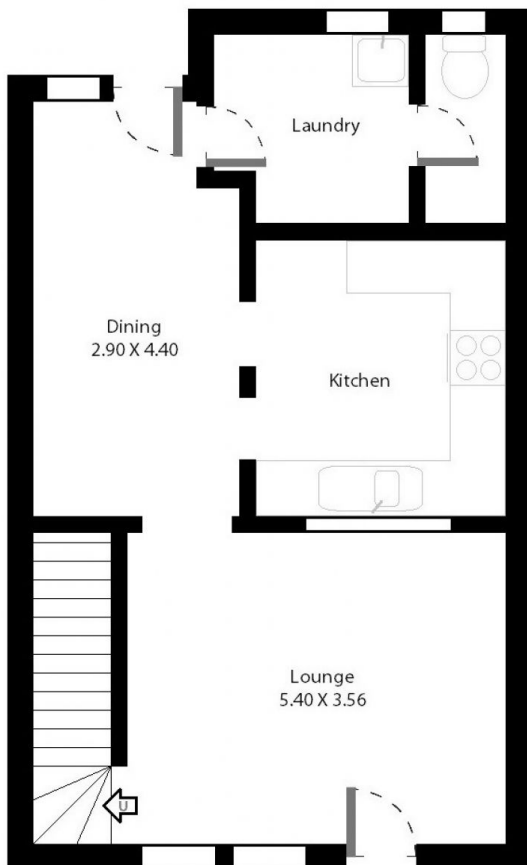


Andrew Boswell
08 8381 6000

Unit 22/21 Cohen Court Clovelly Park, South Australia.



Outside
Entertainment



Picture intended as a reference only. Any specific measurements required should be obtained by an independent surveyor.