

MAGAIN



23 Minchinbury Terrace MARION SA

3 1 1

Please contact Sam Raven for inspection details.

Situated in the highly sought after Oaklands Estate, this 1960s built home is perfect for young or growing families looking to move to this great location, close by to schools, Parkholme Shopping Centre, parks, Marion Outdoor Swimming Pool and handy to transport. Set on a large 800sqm block it is absolutely perfect for those looking for space for the family to grow up.

The functional floor plan offers three bedrooms with lovely polished timber floors and ceiling fans, the front master bedroom has large mirrored robes. Down the hallway and through bi folding doors is the formal lounge room, beautifully finished again with polished timber floors plus

[For full version visit the website](https://www.magain.com.au/property/23-minchinbury-terrace-marion-sa/8436245)

Type : House
Building Size : 11 sqm
Land Size : 800 sqm
View : <https://www.magain.com.au/property/23-minchinbury-terrace-marion-sa/8436245>



Sam Raven
08 8381 6000

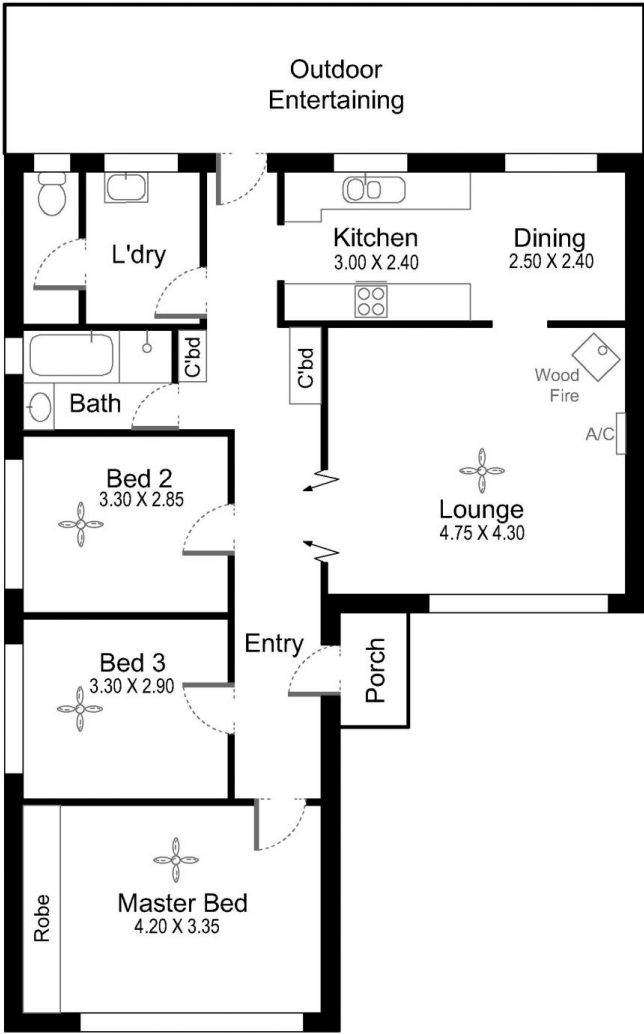
23 Minchinbury Terrace Marion, South Australia

Shed
2.70 X 3.00
(not in position)

Store
1.45 X 1.60

Workshop
3.50 X 2.40

Garage
3.50 X 5.70



Picture intended as a reference only. Any specific measurements required should be obtained by an independent surveyor.