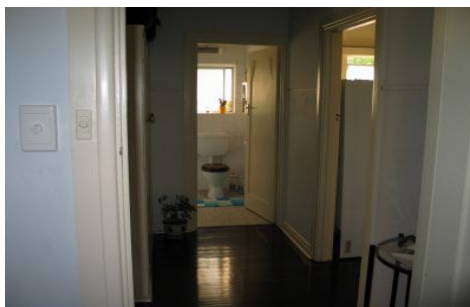
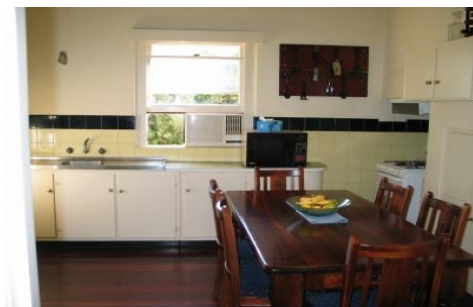


MAGAIN



25 Lindsay Avenue EDWARDSTOWN SA

3 1 1

Position and Potential. Located within walking distance to Castle Plaza Shopping Centre, this original character solid brick three bedroom home is set on a huge block of 900 sqm. Polished Jarrah floorboards throughout most of the residence, bay window to the main bedroom, spacious kitchen/dine with gas cooking and separate living room. Multiple garaging options and main large garage with pit, lock-up carport, small undercover entertaining area and plenty of open space for further additions or garden improvements. Potential to renovate or develop (scc).

To arrange viewing times, please contact Andrew on 0410 444 782 for further details.

Type : House
Building Size : 11 sqm
Land Size : 900 sqm
View : <https://www.magain.com.au/property/25-lindsay-avenue-edwardstown-sa/8436278>



Andrew Boswell
08 8381 6000

<https://www.magain.com.au>
Magain Real Estate

Shop 15, Woodcroft Market Plaza, 217 Pimpala Road W
08 8381 6000

