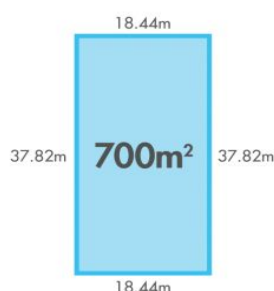


# MAGAIN



## 43 Laurence Street SOUTH PLYMPTON SA

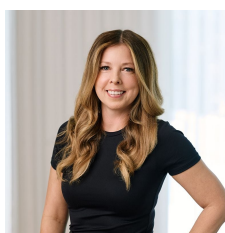
3 2 2

Located in this popular suburb this wonderful solid brick family home is sure to impress young families looking for an older updated home on a traditional 700sqm block with an 18.44m frontage. Plus, this has the added rumpus room with bathroom & kitchenette and a shed.

The original floor plan offers three good size bedrooms, two with built in robes, a large formal lounge room with split system heating & cooling, an updated kitchen with overhead cabinets and breakfast bar overlooking the eat in style meals area. The original bathroom is complete with all its period features including Terrazzo floors, plus a separate toilet and a spacious laundry. To the rear of the home is a filled in sunroom with large windows overlooking the backyard. Through this enclosed room is access to the

**Type** : House  
**Building Size** : 13 sqm  
**Land Size** : 700 sqm  
**View** : <https://www.magain.com.au/property/43-laurence-street-south-plympton-sa/8436341>

[For full version visit the website](#)



**Zoe Ball**  
08 8381 6000

<https://www.magain.com.au>  
Magain Real Estate

Shop 15, Woodcroft Market Plaza, 217 Pimpala Road W  
08 8381 6000

43 Laurence Street South Plympton, South Australia



Picture intended as a reference only. Any specific measurements required should be obtained by an independent surveyor.