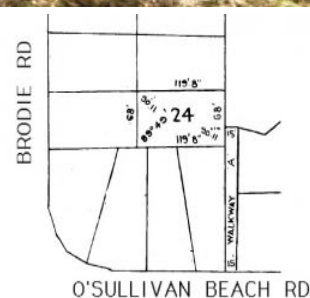


MAGAIN



15 Suzanne Avenue MORPHETT VALE SA

3 1 1

Please call Mike Dobbin or Zoe Usher for inspection times.

Original 1964 family home in need of TLC. Situated on a large 760sqm block, three bedrooms, formal lounge, timber floorboards under the carpets, drive through access to a shed with concrete floor & power plus and a verandah. Perfect project to renovate & bring this old back to its former glory, or possibilities for development or subdivision (stcc).

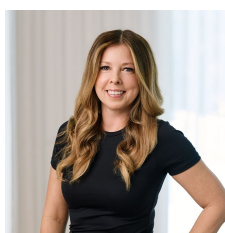
No Easements or Encumbrances.

Don't miss out on this great opportunity, call Mike or Zoe today.

All floorplans, photos and text are for illustration purposes

[For full version visit the website](https://www.magain.com.au/property/15-suzanne-avenue-morphett-vale-sa/8436380)

Type : House
Building Size : 12 sqm
Land Size : 760 sqm
View : <https://www.magain.com.au/property/15-suzanne-avenue-morphett-vale-sa/8436380>



Zoe Ball
08 8381 6000