

# MAGAIN



16 Merchant Avenue MITCHELL PARK SA

3 2 2

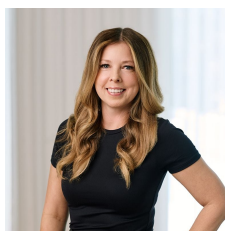
Please contact Mike Dobbin or Zoe Usher for inspection details.

Situated in a lovely leafy street surrounded by other new builds this spacious home presents a perfect opportunity for professional couples, young families or even downsizers who still want some space, but not look after a traditional sized block. Close by to local schools, shops and not far from the ever popular Marion Hotel.

Built by Rossdale in 2002 the home offers a spacious floor plan with three bedrooms with floating timber floors, two with built in robes & master with bay window, walk in robe & ensuite. To the rear of the home is the tiled living areas, with a large lounge room then a partitioned wall to the

[For full version visit the website](https://www.magain.com.au/property/16-merchant-avenue-mitchell-park-sa/8436392)

**Type** : House  
**Building Size** : 16 sqm  
**Land Size** : 416 sqm  
**View** : <https://www.magain.com.au/property/16-merchant-avenue-mitchell-park-sa/8436392>



**Zoe Ball**  
08 8381 6000



*This drawing is for illustration purposes only .  
 All measurements are approximate and details intended  
 to be relied upon should be independently verified.*

Area	m <sup>2</sup>
Living:	103.10
Porch:	1.70
Verandah:	65.68
Garage:	33.00
Pergola:	38.34
Shed:	7.54
<b>Total:</b>	<b>249.36</b>