

MAGAIN



19 Woodland Grove ABERFOYLE PARK SA

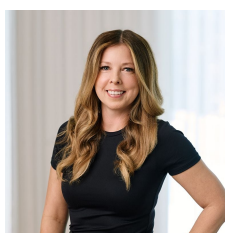
4 🏠 2 🚗 5 🚗

Contact Mike Dobbin or Andrew Boswell for further details. Perfectly located within this picturesque pocket of Woodland Ridge, this large family home makes you feel like you are in the hills, but yet only a very short drive to local shops at Aberfoyle Hub and great nearby schools for all ages of children. Just some of the features of this 'grand' home are;

- Formal lounge
- Master bedroom with walk in robe and ensuite with his and her basins
- Ducted evaporative air conditioning
- 3 way main bathroom
- Large kitchen with recently replaced miele oven, dishwasher, loads of cupboards, water filter and plumbed fridge space and all overlooking the family/meals area

[For full version visit the website](https://www.magain.com.au/property/19-woodland-grove-aberfoyle-park-sa/8436402)

Type : House
Building Size : 22 sqm
Land Size : 1433 sqm
View : <https://www.magain.com.au/property/19-woodland-grove-aberfoyle-park-sa/8436402>



Zoe Ball
08 8381 6000

<https://www.magain.com.au>
Magain Real Estate

Shop 15, Woodcroft Market Plaza, 217 Pimpala Road W
08 8381 6000

19 Woodland Grove Aberfoyle Park, South Australia

