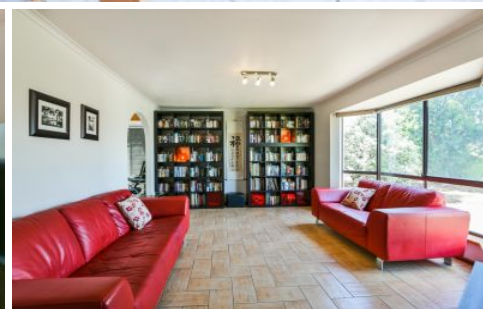


MAGAIN



1 Berenwode Circuit MORPHETT VALE SA

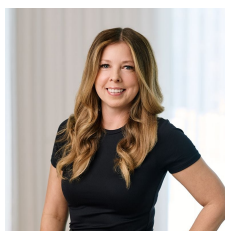
3  1  1 

Please contact Mike Dobbin or Zoe Usher for inspection details.

Situated in the Pimpala Rise Estate, this beautifully presented Sterling built family home offers a functional floor plan along with style & space for everyone. The home is set on a 648sqm corner block in this great location, close by to schools including Woodcroft College, Woodcroft Shopping centre, including Aldi, as well as the renovated Woodcroft Hotel.

Offering three good size bedrooms, all with ceiling fans & two with robes, family bathroom with separate toilet, there is a tiled formal lounge room to the front of the home, finished with bay window and roller blinds. The centralised kitchen has been beautifully renovated with timber fronted

Type : House
Building Size : 14 sqm
Land Size : 648 sqm
View : <https://www.magain.com.au/property/1-b-erenwode-circuit-morphett-vale-sa/8436418>



Zoe Ball
08 8381 6000

[For full version visit the website](https://www.magain.com.au)

<https://www.magain.com.au>
Magain Real Estate

Shop 15, Woodcroft Market Plaza, 217 Pimpala Road W
08 8381 6000

1 Berenwode Circuit Morphett Vale, South Australia



Figure intended as a reference only. Any specific measurements required should be obtained by an independent surveyor.