

MAGAIN



3 Greenville Close ABERFOYLE PARK SA

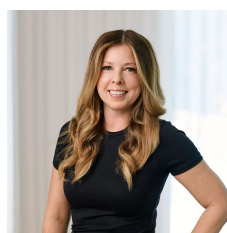
5 🛏 2 🚗 2 🚗

Please contact Mike Dobbin or Zoe Usher for inspection details.

Set on a large 1,508sqm block in this highly regarded pocket of Aberfoyle park sits this architecturally designed 2004 built split level family home built by Beechwood Homes with Western Red Cedar windows to the front and reserve elevations. It has five large double bedrooms, timber balconies with gorgeous views over adjoining reserves and drive through access to the rear garden and huge 4 car shed. This beautiful home easily has a replacement cost over \$350,000 and sits on a prime block of land that would easily attract \$350,000 on its own, offering lucky buyers a wonderful opportunity to make some finishing touches outside and make this into a family

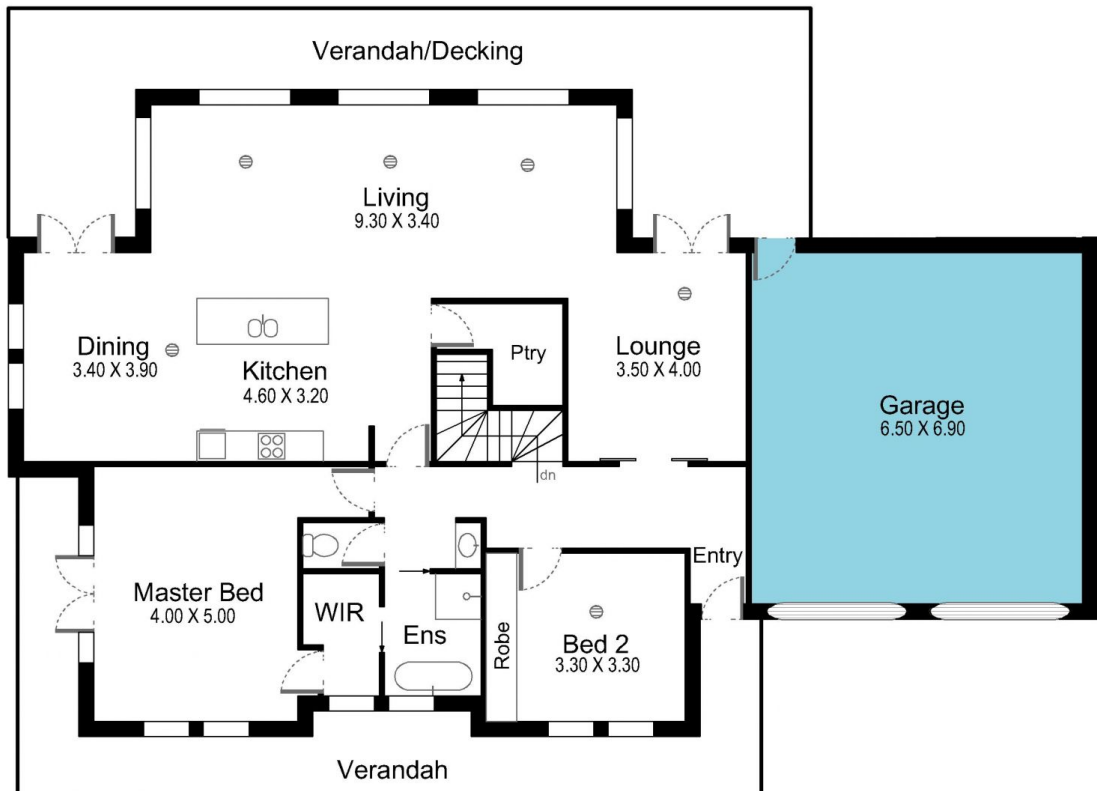
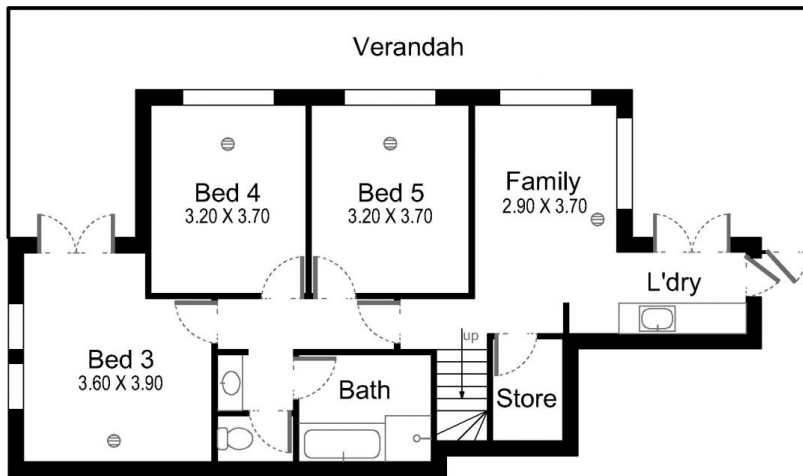
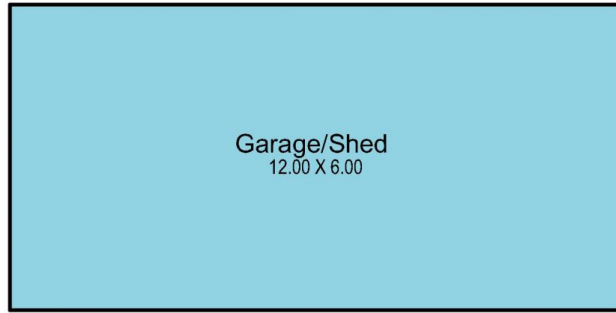
[For full version visit the website](https://www.magain.com.au/property/3-greenville-close-aberfoyle-park-sa/8436422)

Type : House
Building Size : 29 sqm
Land Size : 1508 sqm
View : <https://www.magain.com.au/property/3-greenville-close-aberfoyle-park-sa/8436422>



Zoe Ball
08 8381 6000

3 Greenville Close Aberfoyle Park, South Australia



Picture intended as a reference only. Any specific measurements required should be obtained by an independent surveyor.