

MAGAIN



16 Sean Court COROMANDEL VALLEY SA

5 🛏 2 🚿 2 🚗

Please contact Mike Dobbin & Zoe Usher for inspection details.

Built in 2010 by Rossdale Homes, this beautifully finished home is sure to please young & growing families who are looking in this wonderful pocket of Adelaide's Foothills. Set in a quiet court this structurally engineered home sits on a 902sqm block, the spacious and functional floor plan offers up to five bedrooms, or a large teenage retreat upstairs, plenty of room for the whole family.

There are four good size bedrooms downstairs, the large master with walk in robe & ensuite bathroom featuring double vanity. On entry you are greeted by lovely solid timber floors to the hallway, with a carpeted formal lounge

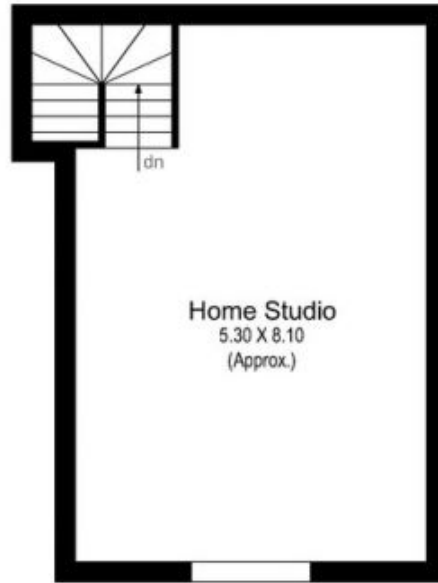
[For full version visit the website](https://www.magain.com.au/property/16-sean-court-coromandel-valley-sa/8436435)

Type : House
Building Size : 29 sqm
Land Size : 902 sqm
View : <https://www.magain.com.au/property/16-sean-court-coromandel-valley-sa/8436435>



Zoe Ball
08 8381 6000

16 Sean Court Coromandel Valley, South Australia



Picture intended as a reference only. Any specific measurements required should be obtained by an independent surveyor.