

MAGAIN



28 Maple Avenue ABERFOYLE PARK SA

3 2 1

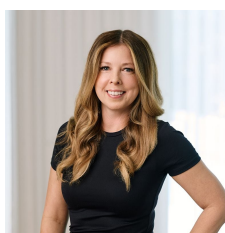
Please contact Mike Dobbin or Zoe Usher for inspection details.

Located just minutes from the Hub shopping centre & quality schools, this wonderful starter or investment opportunity is just perfect for young & growing families looking to move into this great area. With its large raised entertaining area, functional floor plan and added off street parking, it is sure to tick all the boxes for young buyers. Some of the great features of this very affordable home are:

- Master bedroom with ensuite bathroom and robe
- Spacious formal lounge
- Very spacious kitchen with servery overlooking the meals area and garden views

[For full version visit the website](https://www.magain.com.au/property/28-maple-avenue-aberfoyle-park-sa/8436437)

Type : House
Land Size : 661 sqm
View : <https://www.magain.com.au/property/28-maple-avenue-aberfoyle-park-sa/8436437>



Zoe Ball
08 8381 6000

28 Maple Avenue Aberfoyle Park, South Australia

