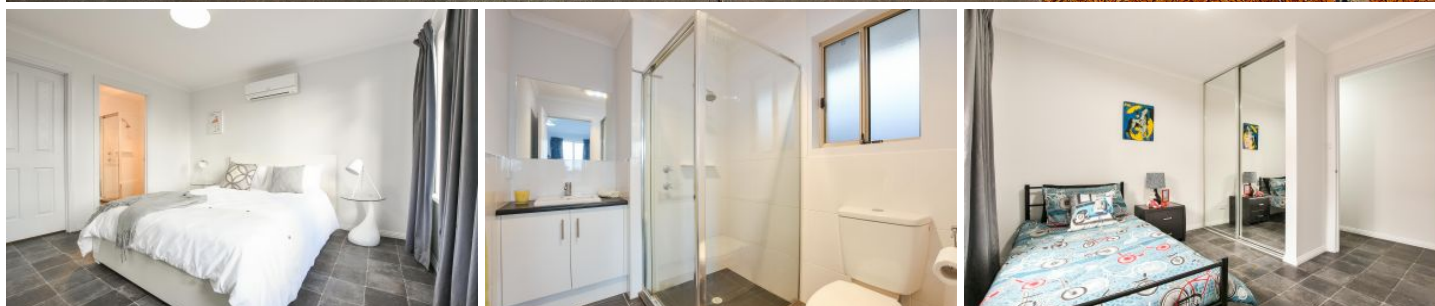


# MAGAIN



## 5 Sabella Place NOARLUNGA DOWNS SA

3 2 1

Please contact Scott McPharlin for details on inspection times.

Whether it be a home or an investment, this property is low maintenance allowing you to relax and enjoy all of the beautiful features of this lovely location, which include the lovely sea to vines riding trail, the Onkaparinga Recreation Park and the gorgeous Onkaparinga river.

When entering the home, you are met with the master bedroom with a large walk in robe and a generous ensuite bathroom. As you make your way down the hallway you will find 2 more great sized bedrooms both fitted with built in robes. These bedrooms are serviced by a 3-way bathroom with a toilet separate to the bathtub and shower and a

[For full version visit the website](https://www.magain.com.au/property/5-sabella-place-noarlunga-downs-sa/8436445)

**Type** : House  
**Building Size** : 14 sqm  
**Land Size** : 300 sqm  
**View** : <https://www.magain.com.au/property/5-sabella-place-noarlunga-downs-sa/8436445>



**Scott McPharlin**  
08 8382 0029

5 Sabella Place Noarlunga Downs, South Australia

