

MAGAIN



33 Woodlea Drive ABERFOYLE PARK SA

4 2 1

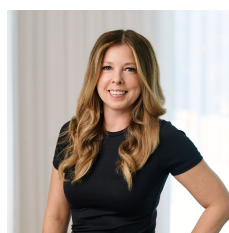
Please contact Zoe Ball or Andrew Boswell for inspection details.

This spacious family home situated in the popular Woodlea Estate offers great spaces both inside & out for young or growing families. From the sunken lounge room to the timber decked entertaining area this home offers lots of features & functionality.

The large floor plan offers four bedrooms, all with robes and the master bedroom with double doors on entry, ceiling fan, built in robe, walk in robe and ensuite. To the front of the home is a sunken formal lounge room with feature brick wall and gas heating. This is overlooked by a formal dining room, currently utilised as a study nook. The kitchen

[For full version visit the website](https://www.magain.com.au/property/33-woodlea-drive-aberfoyle-park-sa/8436469)

Type : House
Building Size : 17 sqm
Land Size : 652 sqm
View : <https://www.magain.com.au/property/33-woodlea-drive-aberfoyle-park-sa/8436469>



Zoe Ball
08 8381 6000

33 Woodlea Drive Aberfoyle Park, South Australia



Picture intended as a reference only. Any specific measurements required should be obtained by an independent surveyor.