

# MAGAIN



## 9 Walsh Court COROMANDEL VALLEY SA

4 🛏 2 🚿 2 🚗

Please contact Andrew Boswell for further details.

What a lifestyle we have here on offer! In amongst this peaceful tree studded location, this large home is a relaxing retreat, but yet only a few minutes drive from local shops, great schools, walks and parks and Blackwood Main Street Shopping.

Plenty of off street parking with a large driveway and double lock up garage. Big decked entry and entertaining area, roomy floor plan and the setting is just lovely.

-Large decked front verandah with tree studded views

-Open plan with timber kitchen w/dishwasher, meals and family area

-Formal lounge with feature windows and storage cupboard

-Big master bedroom with ensuite and double cupboards

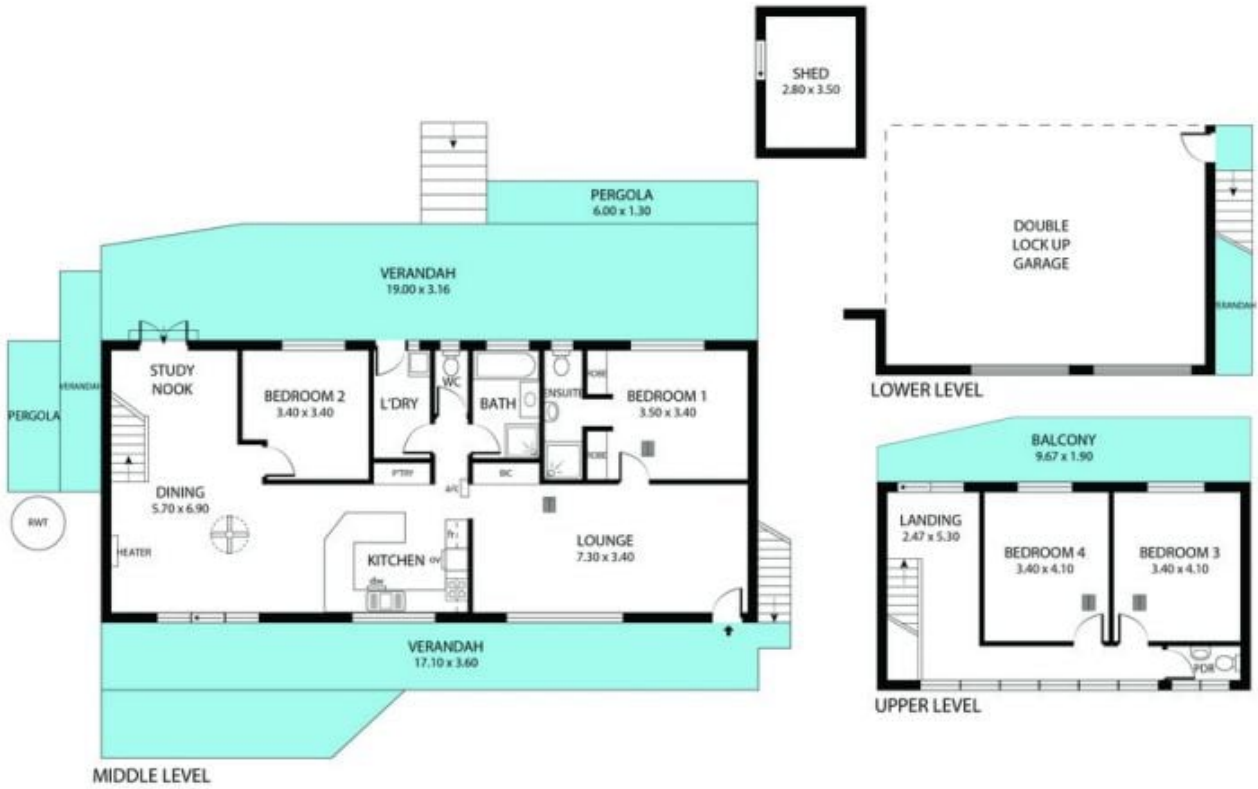
-Main bathroom and separate laundry

[For full version visit the website](https://www.magain.com.au/property/9-walsh-court-coromandel-valley-sa/8436517)

**Type** : House  
**Building Size** : 18 sqm  
**Land Size** : 780 sqm  
**View** : <https://www.magain.com.au/property/9-walsh-court-coromandel-valley-sa/8436517>



**Andrew Boswell**  
08 8381 6000



Scale in metres. This drawing is for illustration purposes only. All measurements are approximate and details intended to be relied upon should be independently verified.

Produced by the Fotobase Group