

MAGAIN



11 Partalunga Circuit WOODCROFT SA

3  2  2 

Please contact Mike Dobbin or Zoe Ball for further details. Immaculate presentation goes hand in hand with this easy care home set in Glenloth Estate. Surrounded by well presented and established homes, this 1996 built home has formal and informal areas and a fantastic all-weather entertaining pergola.

At the front of the home we have a formal lounge and formal dine with split system air conditioning, spacious master bedroom complete with walk in robe, ensuite bathroom, split system air conditioner and bay window.

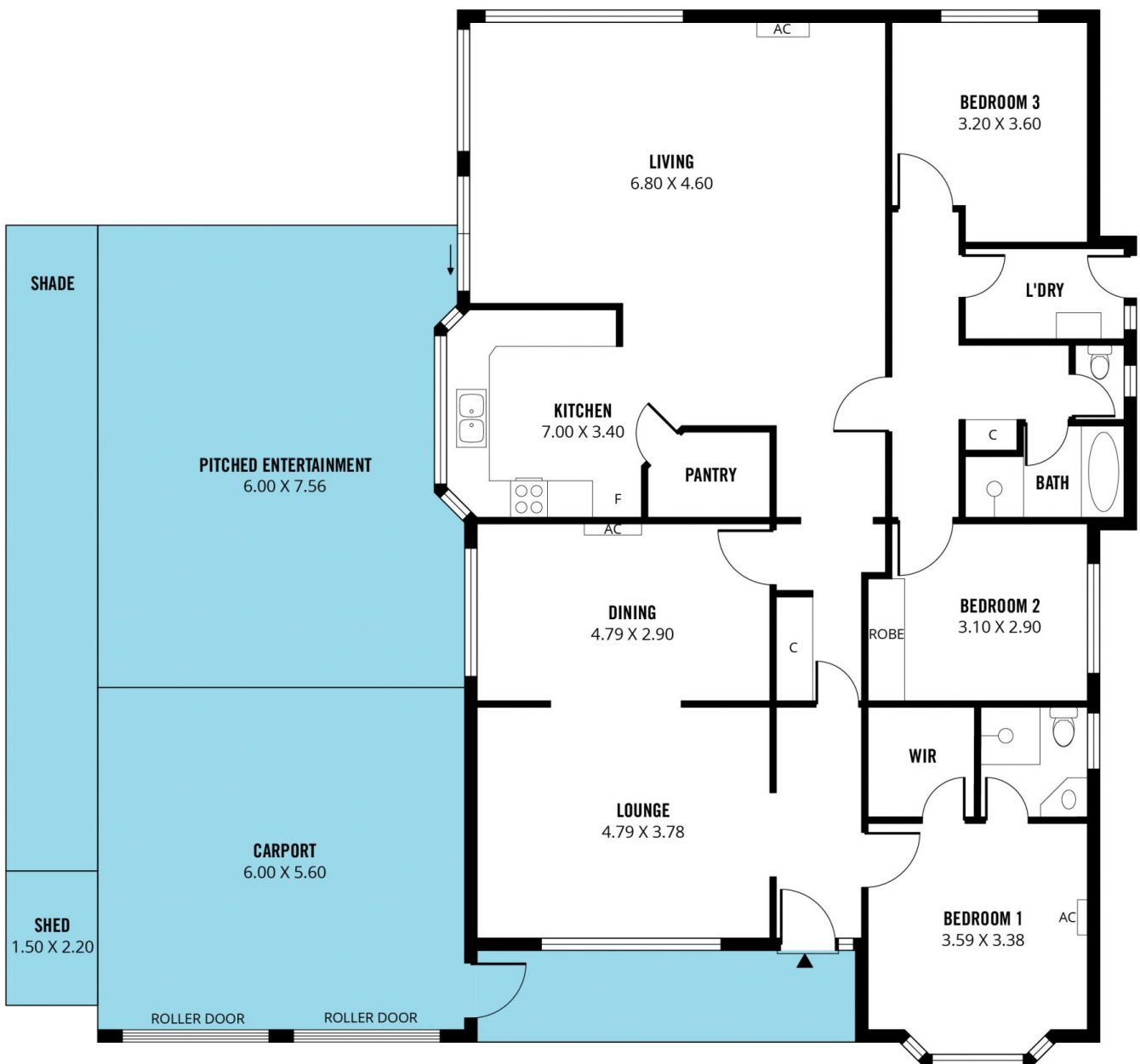
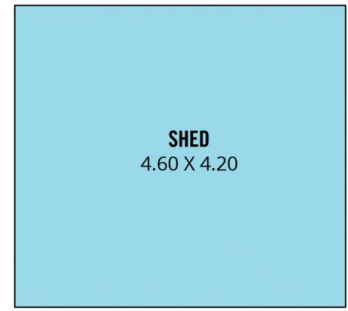
Big hallway leading into extensive open plan family area which also has a split system air conditioner. Large area for the big furniture and a family meals area and all overlooked by the lovely timber kitchen. The big kitchen has a pantry, lots of cupboard and storage space, and a big window

[For full version visit the website](#)

Type : House
Building Size : 19 sqm
Land Size : 600 sqm
View : <https://www.magain.com.au/property/11-partalunga-circuit-woodcroft-sa/8436536>



Zoe Ball
08 8381 6000



Scale in metres. This drawing is for illustration purposes only. All measurements are approximate and details intended to be relied upon should be independently verified.

Produced by **The Fotobase Group**