




MAGAIN



7 Carlisle Court HALLETT COVE SA

3  2  2 

Please contact Mike Dobbin or Zoe Ball for inspection details.

Situated at the end of a quiet cul-de-sac in the heart of 'Cove Point', surrounded by other quality homes, this quality-built family home is sure to offer plenty of space with its functional floor plan and great outdoor areas. Complete with ducted reverse cycle heating & cooling and a fabulous feature brick internal wall, this home will be a must see on this weeks inspection list.

Offering three generous bedrooms, master with large walk in robe and ensuite, while the second bedroom also features a built in. To the front of the home is a formal lounge room with bay window, then a hallway with shadow

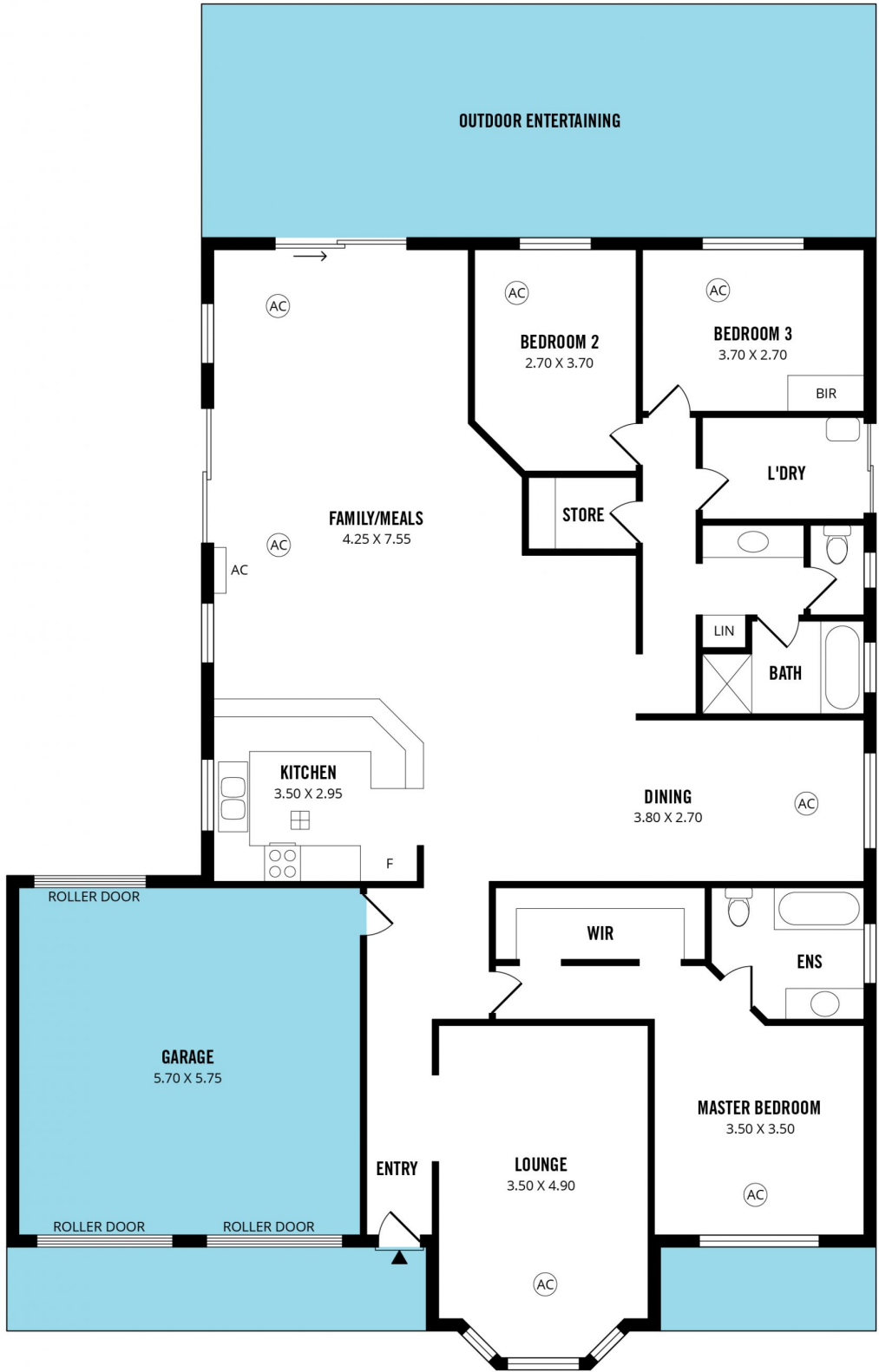
[For full version visit the website](https://www.magain.com.au/property/7-carlisle-court-hallett-cove-sa/8436537)

Type : House
Building Size : 22 sqm
Land Size : 545 sqm
View : <https://www.magain.com.au/property/7-carlisle-court-hallett-cove-sa/8436537>



Zoe Ball
08 8381 6000

SHED
3.00 X 2.45



Scale in metres. This drawing is for illustration purposes only. All measurements are approximate and details intended to be relied upon should be independently verified.

Produced by **The Fotobase Group**