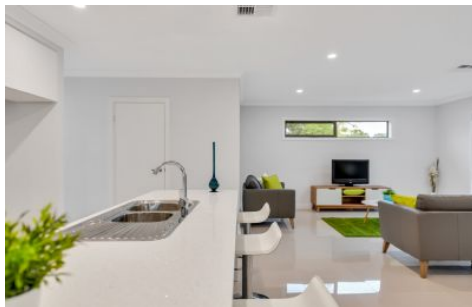


MAGAIN



1 Marston Drive MORPHETT VALE SA

3 2 2

Beautifully presented brand new townhouse with stylish & modern fittings & finishes throughout is sure to please. Move straight in knowing all the hard work has been done for you, and unlike buying an older home, there will be no maintenance or repairs when you move in. Perfect for busy young couples, professionals or even downsizers looking for a low maintenance, lock it & leave it lifestyle.

With a spacious & functional floor plan offering three generous bedrooms on the first floor, large master with a lovely ensuite with dual sinks and frameless shower screens plus a big walk in robe. The other two bedrooms also feature built in robes. There is also the main bathroom, again finished with modern styling & frameless glass shower plus a separate toilet. At the top of the landing is a

Type : House
Land Size : 276 sqm
View : <https://www.magain.com.au/property/1-marston-drive-morphett-vale-sa/8436569>

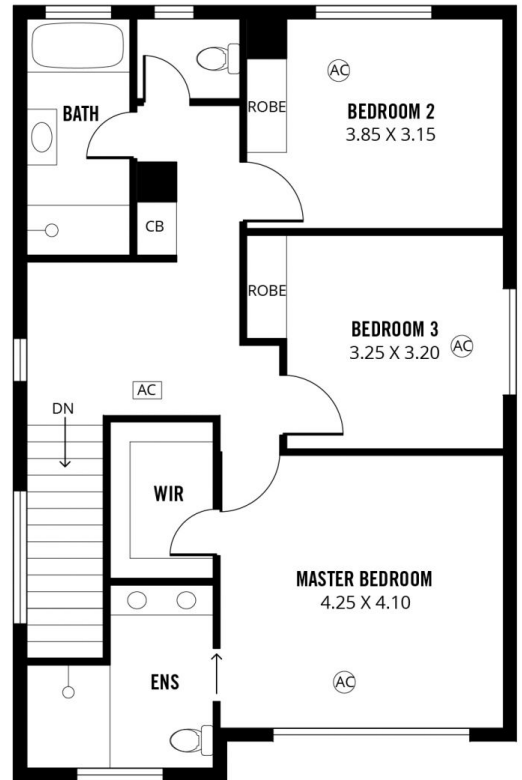
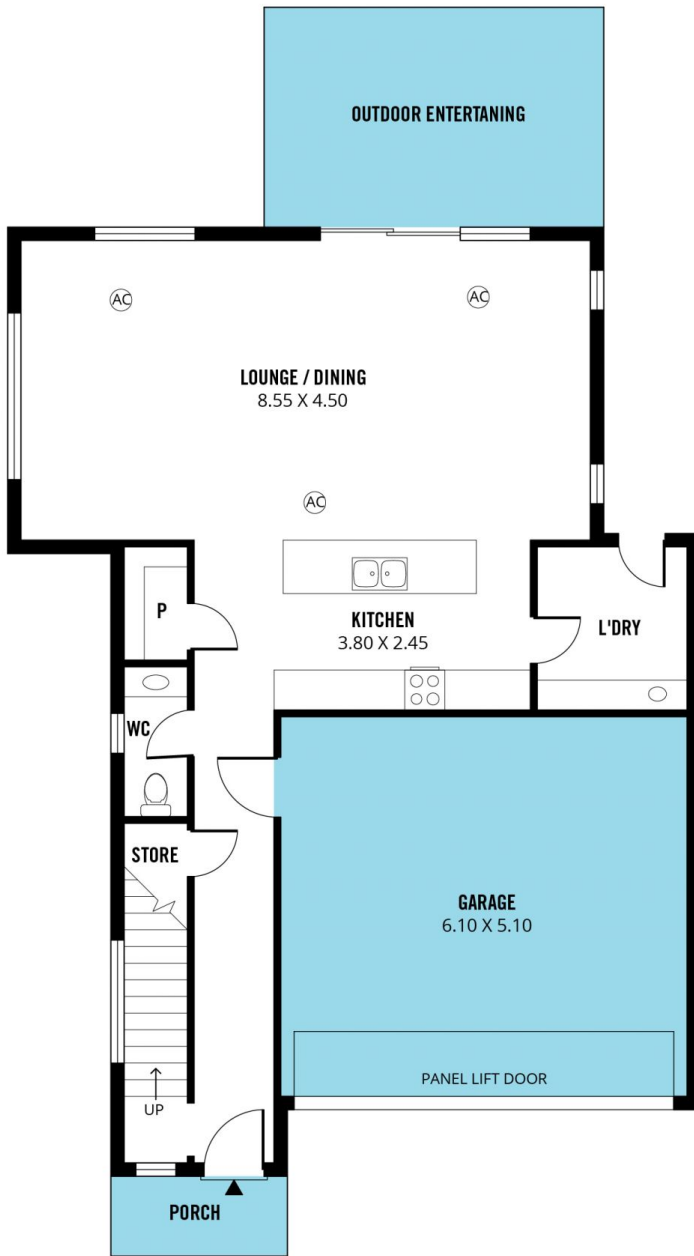


Zoe Ball
08 8381 6000

[For full version visit the website](https://www.magain.com.au)

<https://www.magain.com.au>
Magain Real Estate

Shop 15, Woodcroft Market Plaza, 217 Pimpala Road W
08 8381 6000



Scale in metres. This drawing is for illustration purposes only. All measurements are approximate and details intended to be relied upon should be independently verified.

Produced by **The Fotobase Group**