

MAGAIN



1A Marston Drive MORPHETT VALE SA

3 2 2

Contact Mike Dobbin or Zoe Ball for further details.

A beautifully presented and appointed well built brand new 'larger than the norm' townhouse with stylish & modern fittings & finishes throughout. Move straight in knowing all the hard work has been done for you, and unlike buying an older home, there will be no maintenance or repairs when you move in. Perfect for busy young couples, professionals or even downsizers looking for a low maintenance, 'lock it & leave it' lifestyle.

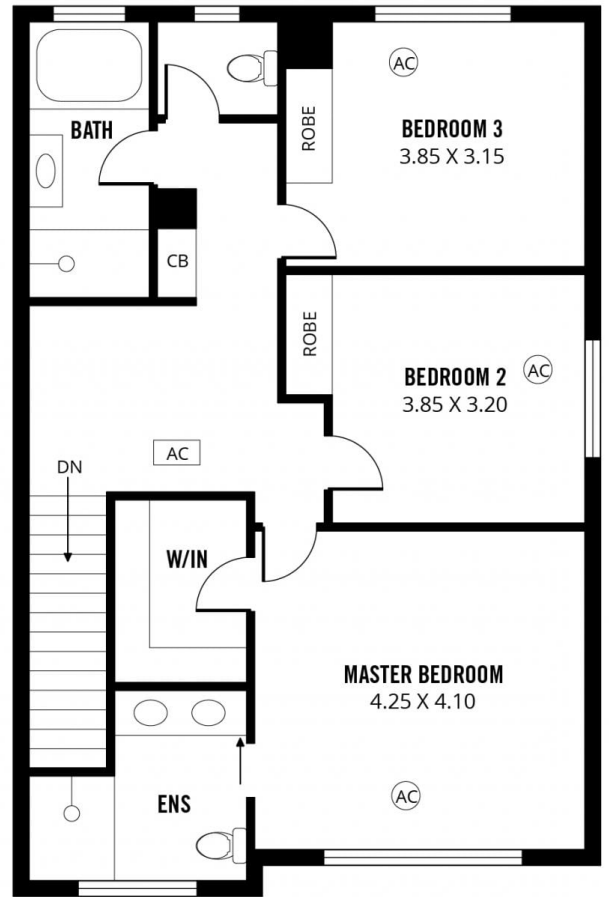
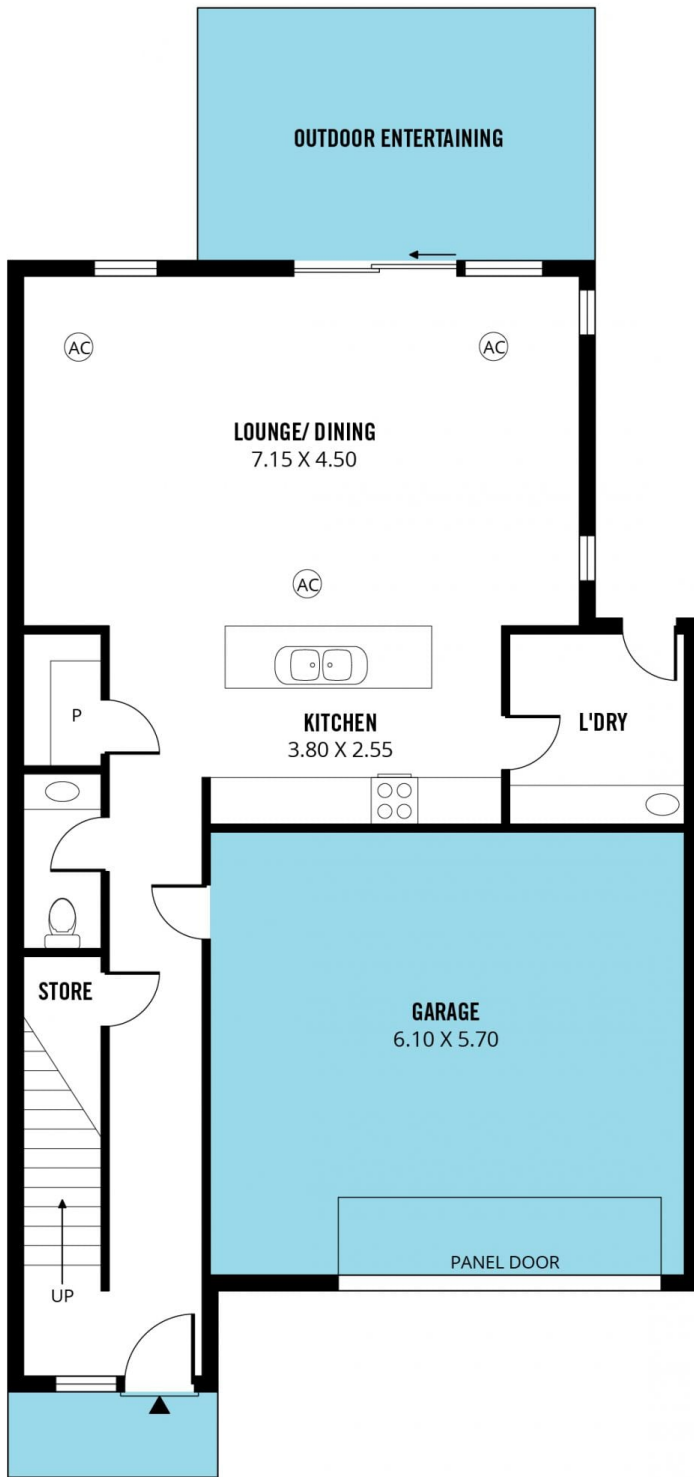
One of only three in this community titled group, only a very short stroll to local shops, parks and main transport routes. With a spacious & functional floor plan offering three generous bedrooms on the first floor, large master with a lovely big ensuite with dual sinks and frameless shower screens plus a big walk in robe. The other two bedrooms

[For full version visit the website](https://www.magain.com.au/property/1a-marston-drive-morphett-vale-sa/8436580)

Type : House
Building Size : 188 sqm
Land Size : 201 sqm
View : <https://www.magain.com.au/property/1a-marston-drive-morphett-vale-sa/8436580>



Zoe Ball
08 8381 6000



Scale in metres. This drawing is for illustration purposes only. All measurements are approximate and details intended to be relied upon should be independently verified.

Produced by **The Fotobase Group**