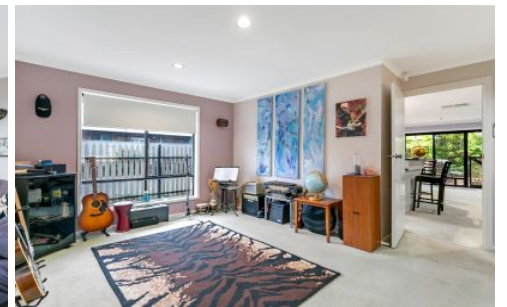





MAGAIN



20 Epsilon Close WOODCROFT SA

4  2  2 

Please call Sam Raven for inspection details.

Located in this popular quiet cul-de-sac this beautifully presented home is perfect for young families or downsizers moving from a large traditional block, looking for low maintenance living without compromising on space. Close by to local shops, handy to transport and several local schools this wonderful home is sure to tick the boxes.

The spacious floor plan offers four good size bedrooms, all with fans, two with built in mirrored robes and of course the large master has ensuite, walk in robe and bay window with electronic roller shutters, perfect for security & privacy. There is a large formal lounge and formal dining area in the middle of the home, with the lounge opening up on a sheltered courtyard. The lounge also offers split system heating & cooling. A doorway leads you through to the

Type : House
Building Size : 21 sqm
Land Size : 445 sqm
View : <https://www.magain.com.au/property/20-epsilon-close-woodcroft-sa/8436596>



Sam Raven
08 8381 6000

[For full version visit the website](https://www.magain.com.au)

<https://www.magain.com.au>
Magain Real Estate

Shop 15, Woodcroft Market Plaza, 217 Pimpala Road W
08 8381 6000

