

MAGAIN



1 Parari Street SHEIDOW PARK SA

3 2 2

Please contact Mike Dobbin or Zoe Ball for inspection details.

Freshly renovated throughout, this neat three bedroom home on a corner block is perfect for young & growing families looking to move into this popular location. Close by to Sheidow Park Primary School it is super handy for families with young school aged children, plus its a short drive to the Hallett Cove shopping centre. Moving in there is absolutely nothing to do, just unpack and get ready to enjoy the in-ground pool and entertaining deck this summer.

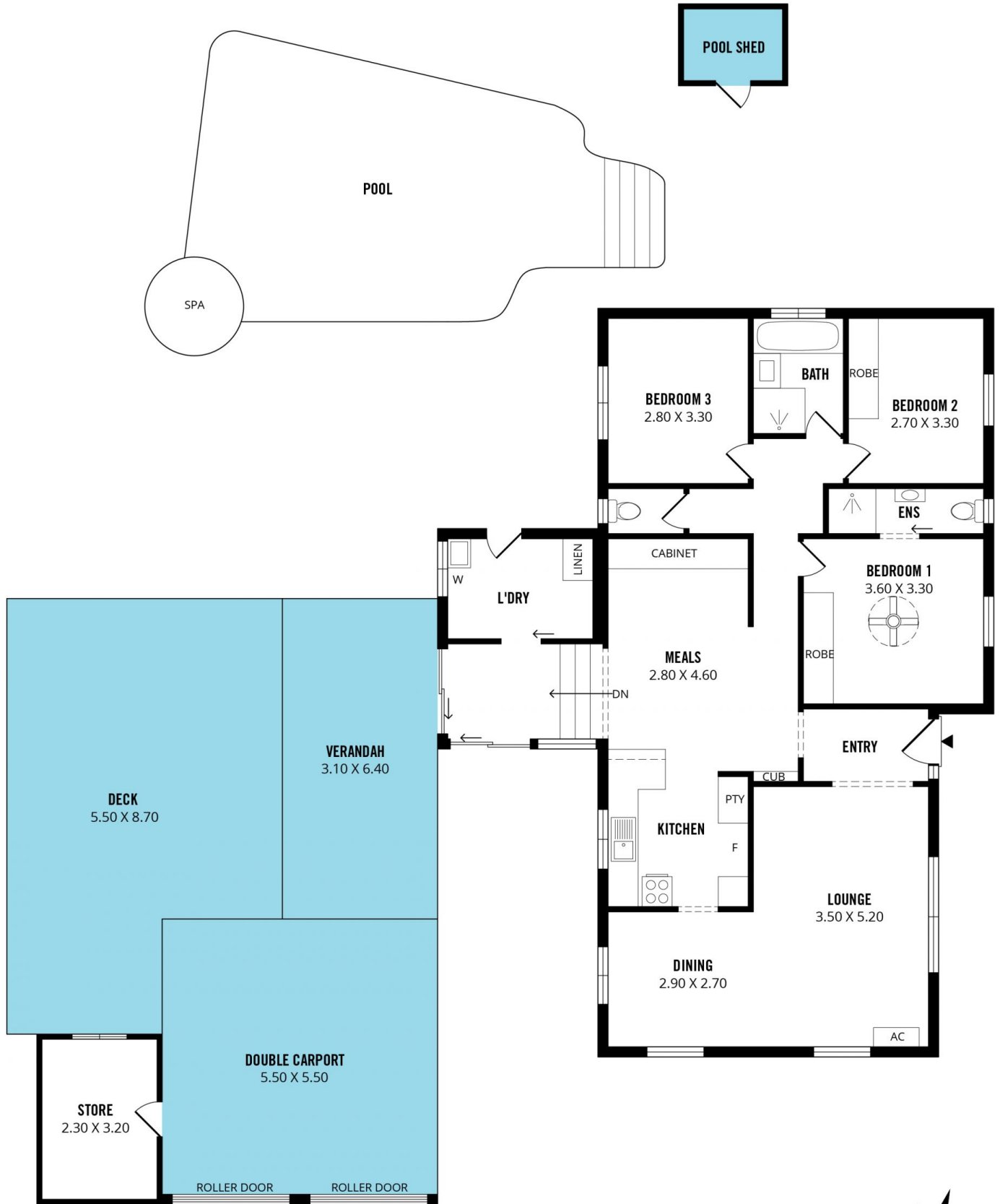
The functional floor plan offers three bedrooms, all with brand new carpet, two with built in robes and master with

[For full version visit the website](https://www.magain.com.au/property/1-parari-street-sheidow-park-sa/8436603)

Type : House
Building Size : 15 sqm
Land Size : 879 sqm
View : <https://www.magain.com.au/property/1-parari-street-sheidow-park-sa/8436603>



Zoe Ball
08 8381 6000



Scale in metres. This drawing is for illustration purposes only. All measurements are approximate and details intended to be relied upon should be independently verified.

Produced by **The Fotobase Group**