

# MAGAIN



## 6 Greenwillow Crescent HAPPY VALLEY SA

3 1 1

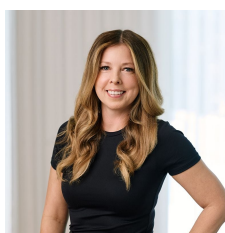
Please contact Mike Dobbin or Zoe Ball for inspection details.

Set in the ever popular "Fountain Valley" estate this wonderful home offers great value buying for first home buyers looking to enter the market, or even savvy investors looking for a solid investment in a family friendly area. Close by to local schools, shops, medical centre, handy to transport and just minutes to the Southern Expressway, it is sure to please.

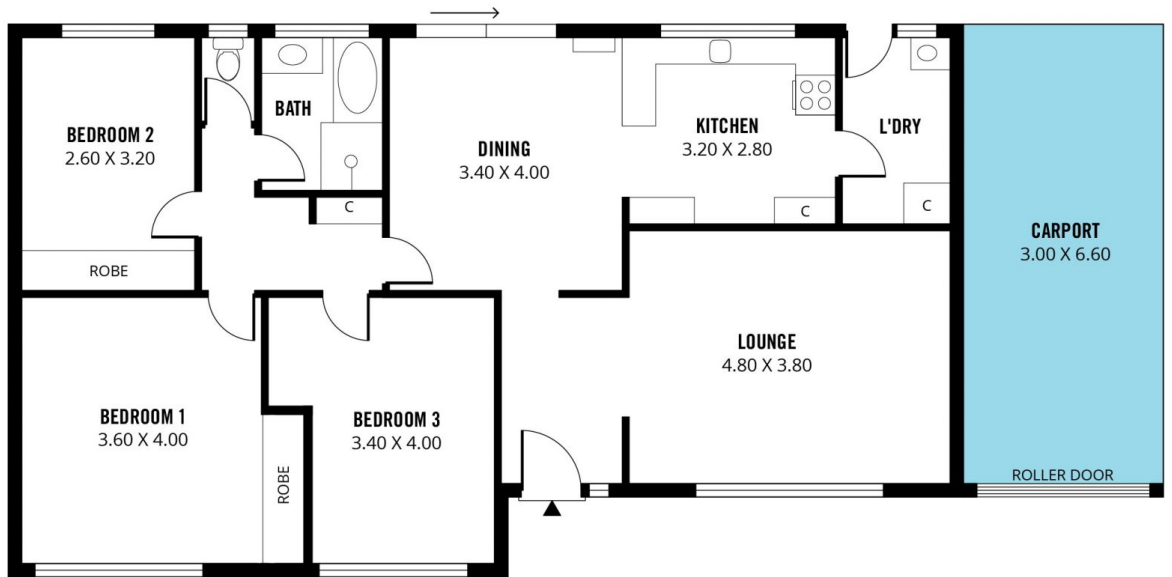
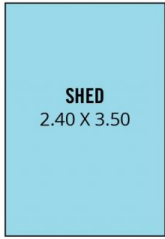
The spacious floor plan offers three bedrooms, the master and bedroom 2 with built in robes. There is a formal lounge room to the front of the home with newly laid floating floors. The dining area is adjacent to the kitchen which features a

[For full version visit the website](https://www.magain.com.au/property/6-greenwillow-crescent-happy-valley-sa/8436605)

**Type** : House  
**Building Size** : 13 sqm  
**Land Size** : 560 sqm  
**View** : <https://www.magain.com.au/property/6-greenwillow-crescent-happy-valley-sa/8436605>



**Zoe Ball**  
08 8381 6000



Scale in metres. This drawing is for illustration purposes only. All measurements are approximate and details intended to be relied upon should be independently verified.

Produced by **The Fotobase Group**