

MAGAIN



39 Sovereign Drive WOODCROFT SA

3 2 1

Please contact Mike Dobbin or Zoe Ball for inspection details.

Designed & built by the current owners in 2014, this beautifully presented home is sure to excite first home buyers, young families or even downsizers looking for a low maintenance home without compromising on space. With two large & separated living areas, a fantastic entertaining area and quality finishes throughout, this home will not disappoint. Located in the heart of the ever popular Kings Green estate it is close by to quality schools, local shops Thaxted Golf Course and very handy for transport.

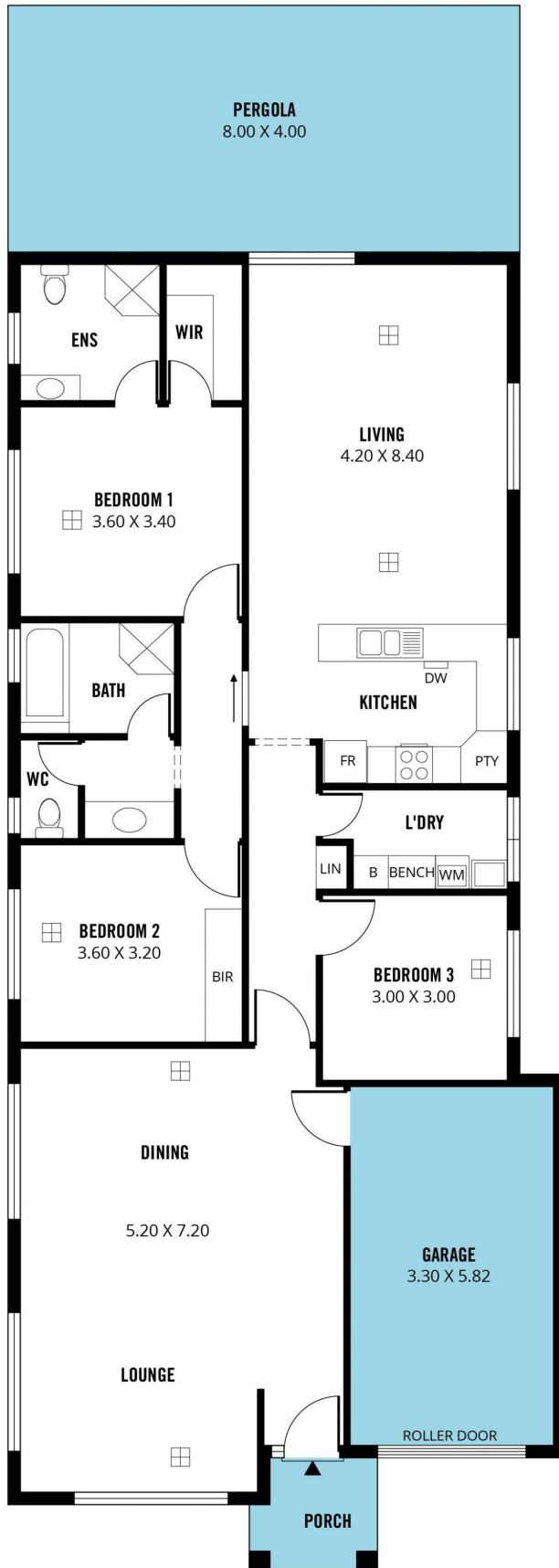
The spacious & functional floor plan offers three bedrooms, all off set from the main living areas. The master has an

[For full version visit the website](https://www.magain.com.au/property/39-sovereign-drive-woodcroft-sa/8436607)

Type : House
Building Size : 17 sqm
Land Size : 309 sqm
View : <https://www.magain.com.au/property/39-sovereign-drive-woodcroft-sa/8436607>



Zoe Ball
08 8381 6000



Scale in metres. This drawing is for illustration purposes only. All measurements are approximate and details intended to be relied upon should be independently verified. Produced by **The Fotobase Group**