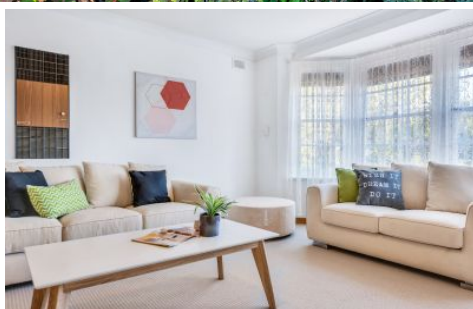


MAGAIN



4 Acre Avenue MORPHETT VALE SA

3 1 1

Please contact Mike Dobbin or Zoe Ball for inspection details.

This solid brick home has been partially updated and well presented, offering plenty of space both inside & outside. Set on a 700sqm block it features drive through access to a big double garage that has been lined and currently used as a teenage retreat, but could easy be converted back as a car garage. Located close by to local shops & school, handy to transport and easy access to the Southern Expressway for a quicker commute.

The functional floor plan offers three bedrooms, all with robes and security shutters & the larger master with ceiling fan. To the front is a formal lounge with bay window, ceiling

[For full version visit the website](https://www.magain.com.au/property/4-acre-avenue-morphett-vale-sa/8436608)

Type : House
Building Size : 13 sqm
Land Size : 700 sqm
View : <https://www.magain.com.au/property/4-acre-avenue-morphett-vale-sa/8436608>



Zoe Ball
08 8381 6000