

# MAGAIN



## 40 Glenhelen Road MORPHETT VALE SA

3  1  2 

This home is definitely a hidden gem, located on a quiet street close to the best Southern Beaches and has access to some great walking trails.

Once inside the home you are greeted with an L-shape lounge and dining room. Your kitchen has plenty of space and has a meals area. There is a large opening allowing the lounge/dining area to be a part of the kitchen space.

Down the hallway you have all three bedrooms and the main bathroom. The master bedroom has a large built in wardrobe and also has a ceiling fan. Bedrooms two and three are great in size and allow space to install your own wardrobes if you wish. All three bedrooms have brand new carpet installed, giving you that nice cosy feeling. The main

**Type** : House  
**Building Size** : 12 sqm  
**Land Size** : 571 sqm  
**View** : <https://www.magain.com.au/property/40-glenhelen-road-morphett-vale-sa/8436620>



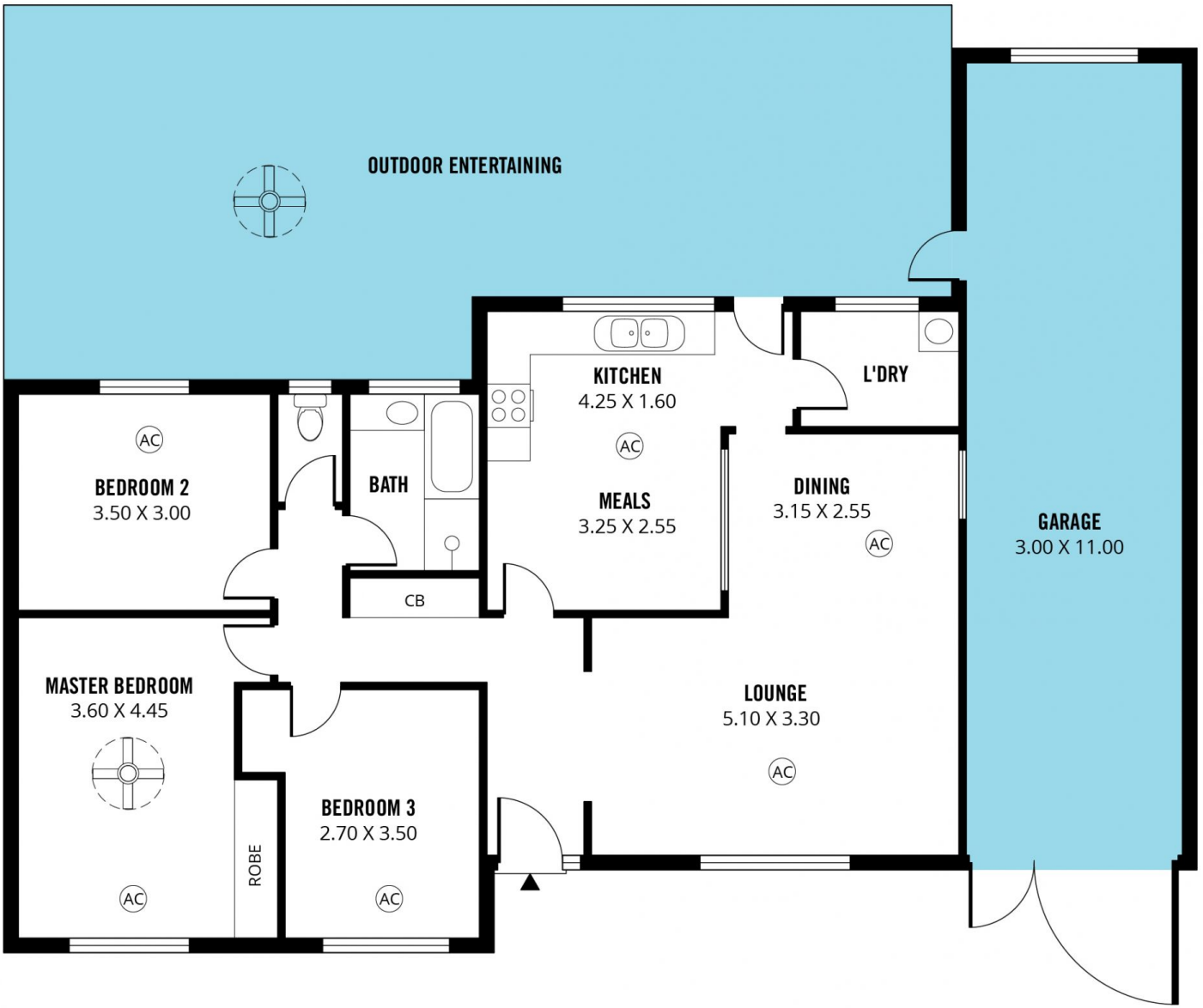
**Scott McPharlin**  
08 8382 0029

[For full version visit the website](https://www.magain.com.au)

<https://www.magain.com.au>  
Magain Real Estate

Shop 15, Woodcroft Market Plaza, 217 Pimpala Road W  
08 8381 6000

**SHED**  
3.00 X 1.60



Scale in metres. This drawing is for illustration purposes only. All measurements are approximate and details intended to be relied upon should be independently verified.