

MAGAIN



2B Canberra Drive ABERFOYLE PARK SA

4 2 1

Contact Andrew Boswell for further details.

Welcome to 'Parkview'. A large home with a great floor plan, set in a very handy position overlooking a great park with a kids play area, local schools, deli and shops.

The home has been given a makeover giving you the opportunity to move in and start living straight away. Large spacious light and bright rooms throughout, new carpets, new window treatments, big formal lounge and formal dine and enormous kitchen overlooking the meals area. Some of the many features of this home are;

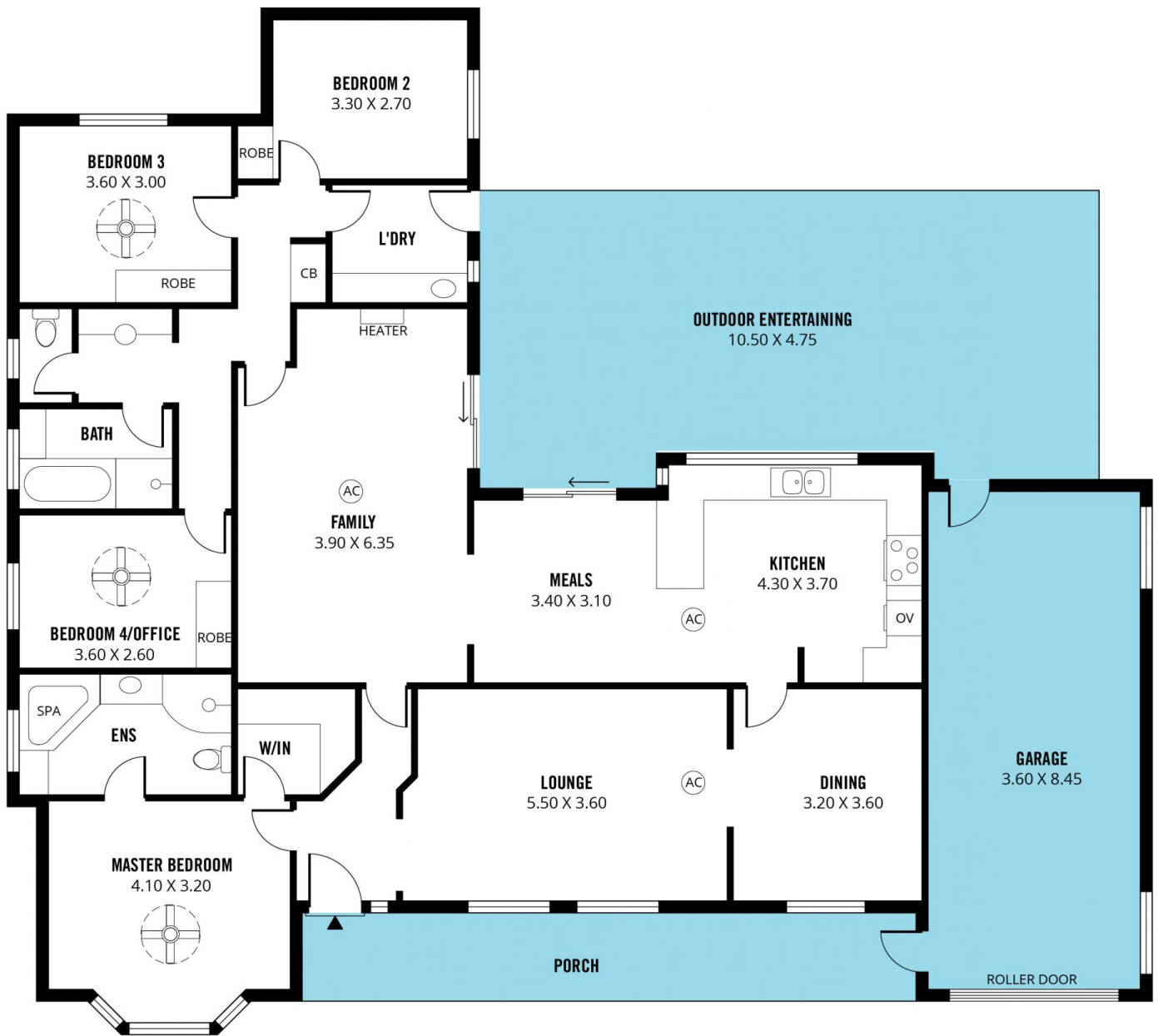
- Large master bedroom with bay window, walk in robe, updated ensuite with corner bath and ceiling fan
- Big lounge room and dining room with views over the park
- Kitchen with so much cupboard and bench space (new bench tops) with large fridge alcove, dishwasher and

[For full version visit the website](https://www.magain.com.au/property/2b-canberra-drive-aberfoyle-park-sa/8436622)

Type : House
Building Size : 22 sqm
Land Size : 576 sqm
View : <https://www.magain.com.au/property/2b-canberra-drive-aberfoyle-park-sa/8436622>



Andrew Boswell
08 8381 6000



Scale in metres. This drawing is for illustration purposes only. All measurements are approximate and details intended to be relied upon should be independently verified.

Produced by **The Fotobase Group**