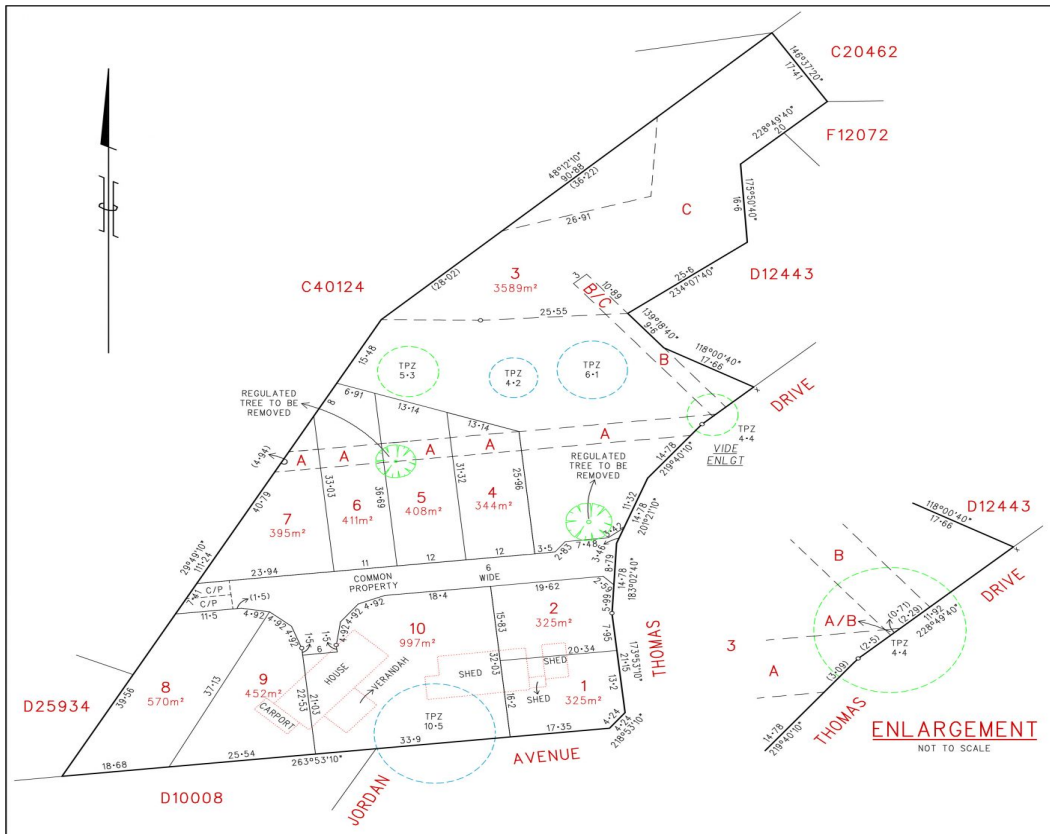
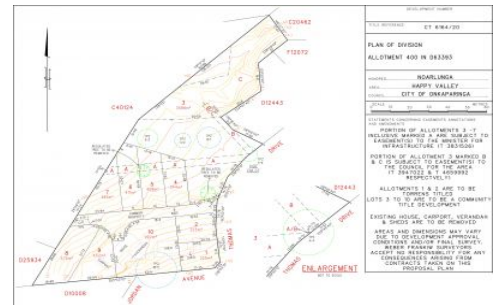
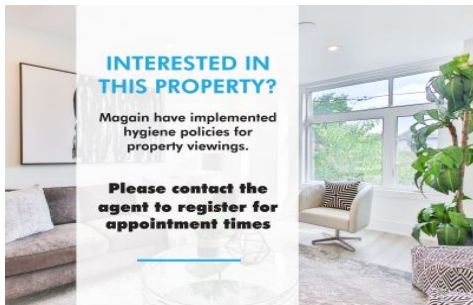


MAGAIN



DEVELOPMENT NUMBER	
TITLE REFERENCE	CT 6164 / 20
PLAN OF DIVISION	ALLOTMENT 400 IN D63393
HUNDRED	NOARLUNGA
AREA	HAPPY VALLEY
COUNCIL	CITY OF ONKAPARINGA
SCALE	0 10 20 30 40 50 60 METRES
STATEMENTS CONCERNING EASEMENTS ANNOTATIONS AND AMENDMENTS	<p>PORTION OF ALLOTMENTS 3 - 7 INCLUSIVE MARKED A ARE SUBJECT TO EASEMENT(S) TO THE MINISTER FOR INFRASTRUCTURE (T 3831526)</p> <p>PORTION OF ALLOTMENT 3 MARKED B & C IS SUBJECT TO EASEMENT(S) TO THE COUNCIL FOR THE AREA (T 3947022 & T 4659992 RESPECTIVELY)</p> <p>ALLOTMENTS 1 & 2 ARE TO BE TORRENS TITLED LOTS 3 TO 10 ARE TO BE A COMMUNITY TITLE DEVELOPMENT</p> <p>EXISTING HOUSE, CARPORT, VERANDAH & SHEDS ARE TO BE REMOVED</p> <p>AREAS AND DIMENSIONS MAY VARY DUE TO DEVELOPMENT APPROVAL CONDITIONS AND/OR FINAL SURVEY. WEBER FRANKIW SURVEYORS ACCEPT NO RESPONSIBILITY FOR ANY CONSEQUENCES ARISING FROM CONTRACTS TAKEN ON THIS PROPOSAL PLAN</p>



7 Jordan Avenue HAPPY VALLEY SA

3 🏠 1 🚗 3 🚗

This great development opportunity sits in the heart of Happy Valley, a huge block on 8,399 square meters on the corner of Jordan Avenue & Thomas Street giving you two street frontages to work with. A 10 Lot land division concept plan has been drawn up, showing you some of the great potential in the parcel of land. It is very rare for an allotment over 8,000 square meters to pop up like this, making it all the more an special opportunity to develop into multiple allotments, including two Torrens Title blocks (stcc).

The original solid brick home offers three bedrooms, all with robes, formal lounge & dining with feature stone wall & fireplace, lovely timber kitchen with views out over the property plus a good size bathroom with a second toilet.

[For full version visit the website](https://www.magain.com.au)

Type : House
Building Size : 16 sqm
Land Size : 8399 sqm
View : <https://www.magain.com.au/property/7-jordan-avenue-happy-valley-sa/8436628>



Zoe Ball
08 8381 6000

<https://www.magain.com.au>
Magain Real Estate

Shop 15, Woodcroft Market Plaza, 217 Pimpala Road W
08 8381 6000

