

# MAGAIN



## 11 Horseshoe Drive WOODCROFT SA

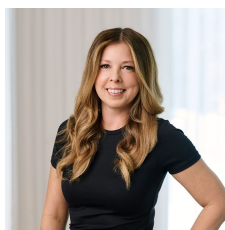
3 2 5

Situated in the ever popular Woodcroft Farm, this beautifully presented family home offers so many features it needs to be seen in person to appreciate the work that has gone into this wonderful home. Set on a large 952 sqm block, the home boasts a huge entertaining area, triple garages plus drive through access for boat or caravan as well as a big shed that has been partially converted into a self-contained studio. Rest assured, this home has been meticulously set up with low maintenance living in mind giving you more time to relax with family & friends and enjoy this marvellous home for years to come.

The functional floor plan offers three bedrooms, all with ceiling fans and built in robes, two with brand new carpet and master also with ensuite & walk in robe. To the front of

[For full version visit the website](https://www.magain.com.au)

**Type** : House  
**Building Size** : 16 sqm  
**Land Size** : 952 sqm  
**View** : <https://www.magain.com.au/property/11-horseshoe-drive-woodcroft-sa/8436659>



**Zoe Ball**  
08 8381 6000



Scale in metres. This drawing is for illustration purposes only. All measurements are approximate and details intended to be relied upon should be independently verified.

Produced by The Fotokase Group