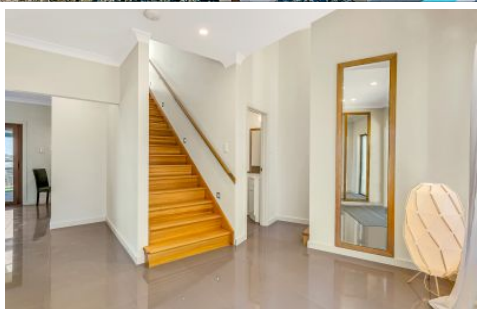


MAGAIN



9 Aramis Mews NOARLUNGA DOWNS SA

4  2  2 

This stunning, architecturally designed, 4-bedroom, 2-bathroom home with a double garage and a study has the most stunning views and is definitely one you need to see for yourself.

The large hallway you enter from the front door really gives you a grand feeling which flows straight into your open plan living/ dining and kitchen area. All of this over looks your gorgeous entertaining area and takes in some incredible views.

The kitchen has so many features, including stainless steel appliances including a dishwasher and a generous walk in pantry. Your kitchen flows straight to your laundry which also takes in those amazing views from outside.

[For full version visit the website](https://www.magain.com.au/property/9-aramis-mews-noarlunga-downs-sa/8436663)

Type : House
Building Size : 26 sqm
Land Size : 518 sqm
View : <https://www.magain.com.au/property/9-aramis-mews-noarlunga-downs-sa/8436663>



Scott McPharlin
08 8382 0029

<https://www.magain.com.au>
Magain Real Estate

Shop 15, Woodcroft Market Plaza, 217 Pimpala Road W
08 8381 6000

