

MAGAIN



35 Victory Court NOARLUNGA DOWNS SA

3 1 5

Situated in a convenient location within an easy walking distance to amenities, this character filled home oozes charm and appeal. If you are looking for that perfect family home, or just space to spread your wings then definitely don't miss out on this one, the peaceful undercover area is just waiting to host that big family BBQ! Set amongst beautiful gardens and established trees in the broader landscape. This property includes a double lock up garage, endless amounts of storage space and plenty of room for the pets to run around in the yard!

The property is located on a completely private and peaceful cul-de-sac with security gates, set back from the street offering the highest privacy. From the moment you enter this impressive residence you will be struck by the volumes of space and light, set against the garden and lush

Type : House
Land Size : 793 sqm
View : <https://www.magain.com.au/property/35-victory-court-noarlunga-downs-sa/8436664>

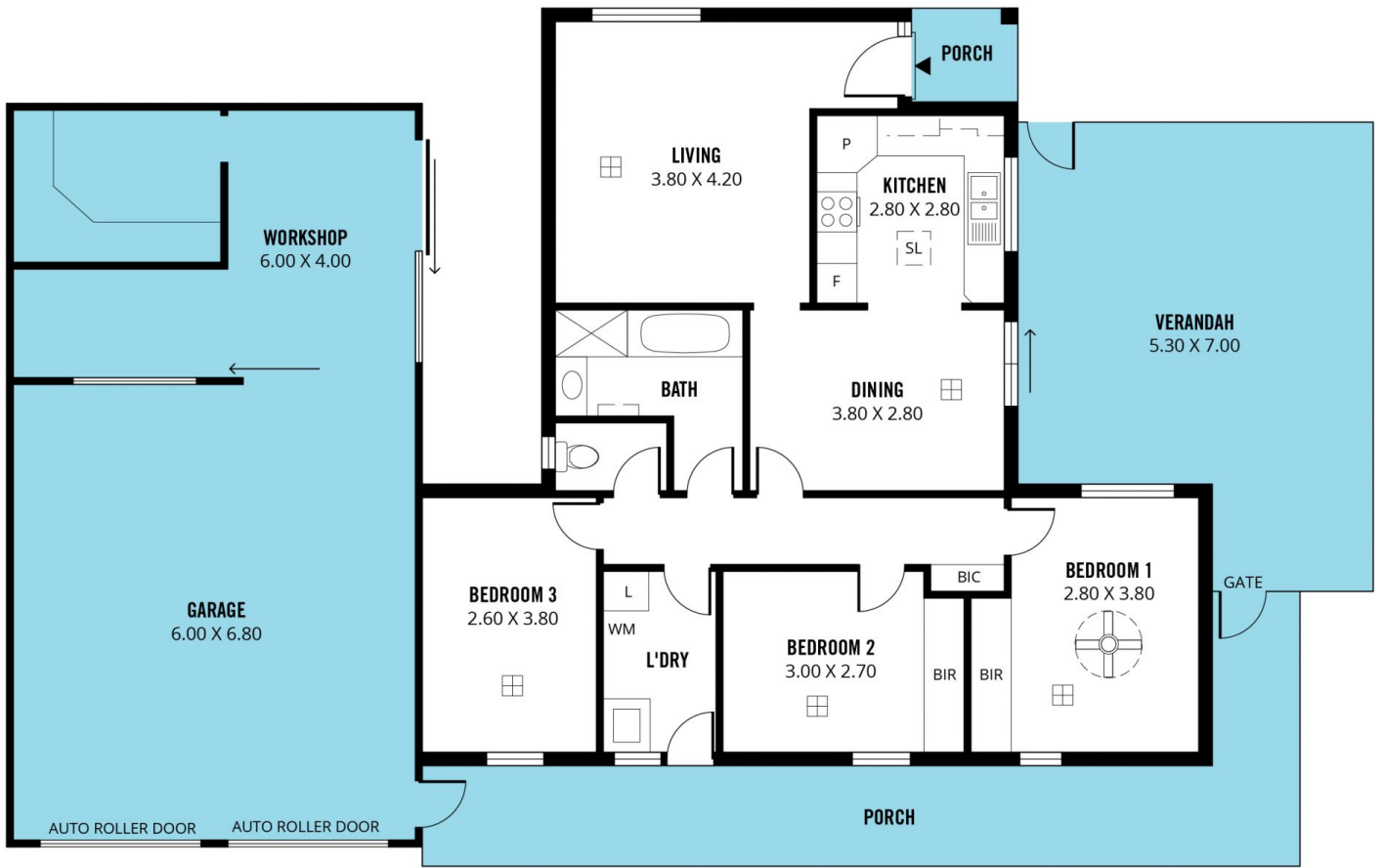


Andrew Robey
08 8366 2292

[For full version visit the website](https://www.magain.com.au)

<https://www.magain.com.au>
Magain Real Estate

Shop 15, Woodcroft Market Plaza, 217 Pimpala Road W
08 8381 6000



Scale in metres. This drawing is for illustration purposes only. All measurements are approximate and details intended to be relied upon should be independently verified.

Produced by **The Fotobase Group**