




# MAGAIN



## 7 Wheatsheaf Road MORPHETT VALE SA

3  1  1 

In its day this home would certainly been an impressive home with its huge feature fire place and timber screens which are still all intact and would make a fantastic feature in this renovation project.

The home features 3 great sized bedrooms the main and bedroom 3 having original built in robes, with bedroom 2 have plenty of room to have one installed.

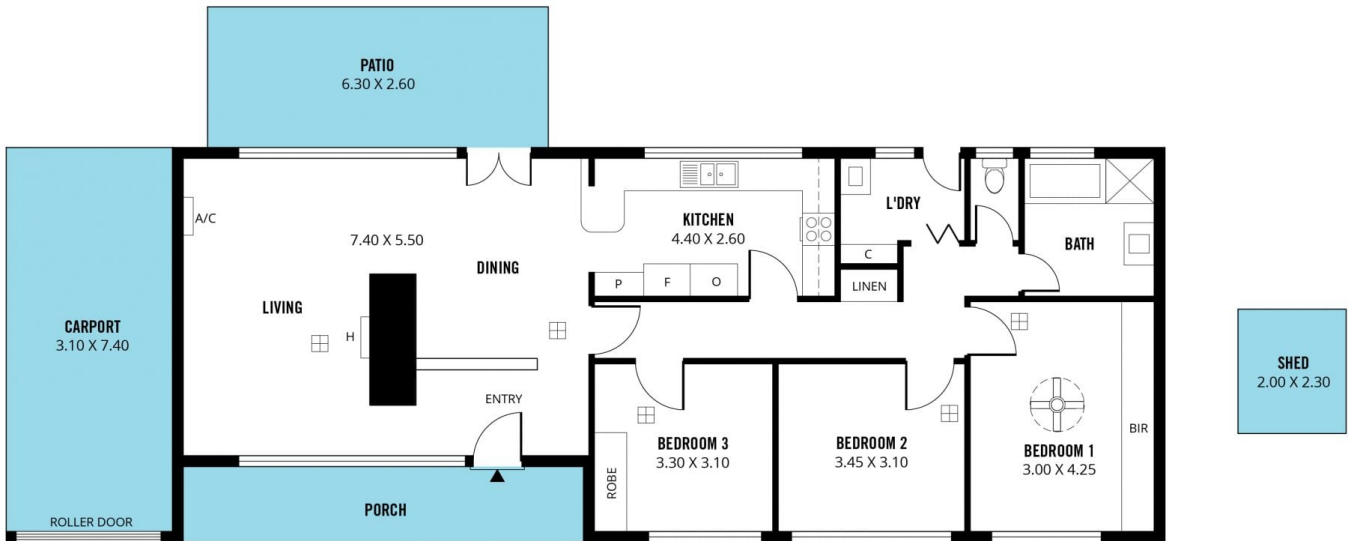
The bathroom is huge but does require a full renovation and the kitchen is also very spacious but also needs to be upgraded. The home has timber floors throughout which are in good condition as they have been covered by carpet for most of their life.

[For full version visit the website](https://www.magain.com.au/property/7-wheatsheaf-road-morphett-vale-sa/8436675)

**Type** : House  
**Building Size** : 15 sqm  
**Land Size** : 740 sqm  
**View** : <https://www.magain.com.au/property/7-wheatsheaf-road-morphett-vale-sa/8436675>



**Scott McPharlin**  
08 8382 0029



Scale in metres. This drawing is for illustration purposes only. All measurements are approximate and details intended to be relied upon should be independently verified.

Produced by **The Fotobase Group**