

MAGAIN



25 Woodland Grove ABERFOYLE PARK SA

3 🛏 2 🚿 2 🚗

Contact Andrew Boswell for further details.

Set at the end of a no-thru street, elevated and private and peaceful, this spacious home on large grounds of some 1871sqm approx really does appeal to those who like to be at one with nature and all that it offers. The gardens offer natives, areas to relax to wind down and enjoy your location in Woodland Ridge and further scope to add your touches.

The big entrance hallway to the home leads to either your big family area or formal lounge and dining. The kitchen with pantry and dishwasher overlooks the meals and family area and also out onto the rear patio. Some of the lovely features of this home are;

-Big master bedroom with split system air conditioner, walk thru robe and updated large ensuite bathroom

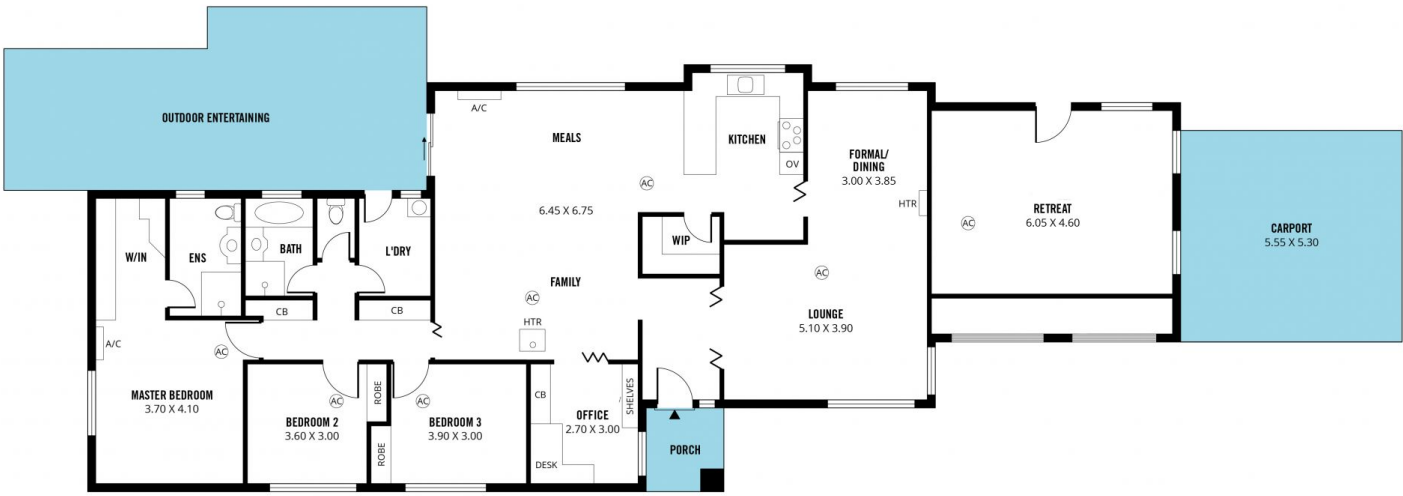
[For full version visit the website](https://www.magain.com.au/property/25-woodland-grove-aberfoyle-park-sa/8436679)

Type : House
Building Size : 22 sqm
Land Size : 1871 sqm
View : <https://www.magain.com.au/property/25-woodland-grove-aberfoyle-park-sa/8436679>



Andrew Boswell
08 8381 6000

SHED
3.15 X 2.15



Scale in metres. This drawing is for illustration purposes only. All measurements are approximate and details intended to be relied upon should be independently verified.

Produced by The Fotobase Group