

# MAGAIN



## INTERESTED IN THIS PROPERTY?

Magain have implemented hygiene policies for property viewings.

Please contact the agent to register for appointment times

43 Sovereign Drive WOODCROFT SA

3 2 1

In the heart of the popular Kings Green Estate, this beautifully presented home offers three bedrooms, two bathrooms, a huge open plan living area and a large paved undercover entertaining area. Freshly painted throughout and with brand new carpets in all bedrooms it is ready & waiting for the lucky new owners to move straight in.

The spacious floor plan offers three good size bedrooms, including the master with walk in robe & ensuite, there is a three way main bathroom with separate vanity, bath & shower and toilet. Down the hallway is an added linen storage cupboard. To the rear of the home is the large open plan living & dining area, finished with floating timber floors, LED lighting and a lovely bay window this great space is perfect for day to day living, or relaxing watching

**Type** : House  
**Building Size** : 15 sqm  
**Land Size** : 382 sqm  
**View** : <https://www.magain.com.au/property/43-sovereign-drive-woodcroft-sa/8436701>

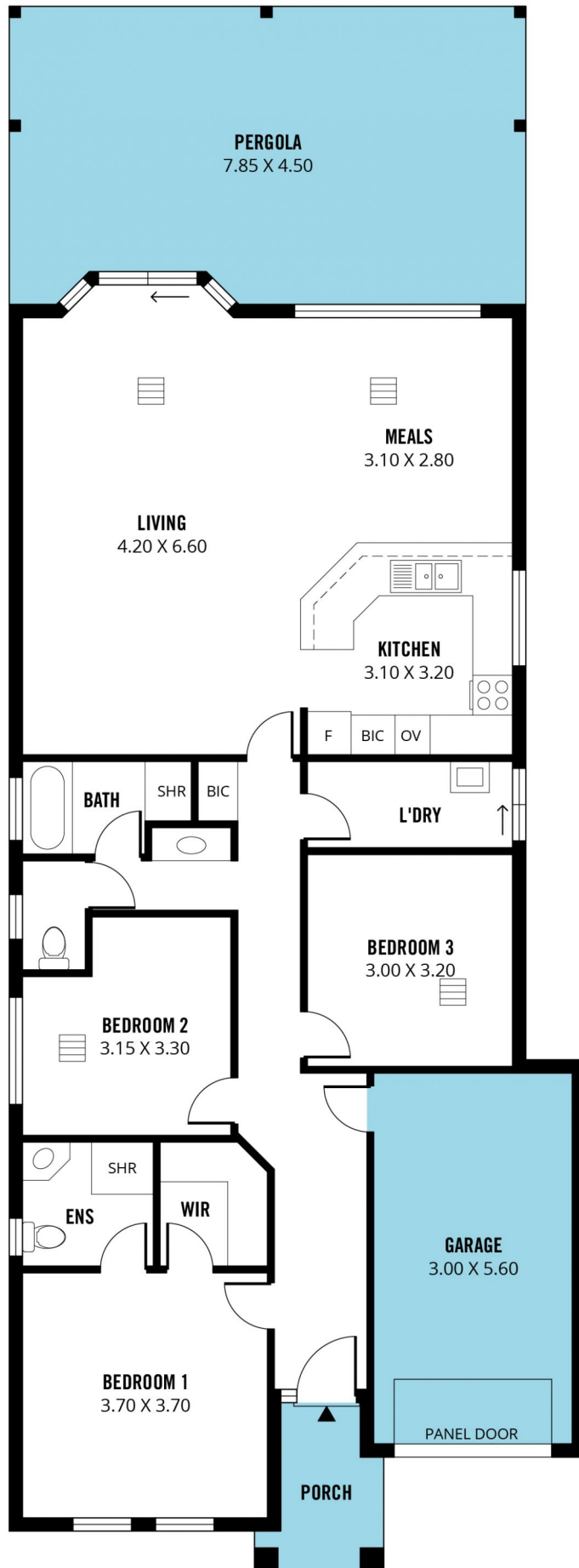


**Zoe Ball**  
08 8381 6000

[For full version visit the website](https://www.magain.com.au)

<https://www.magain.com.au>  
Magain Real Estate

Shop 15, Woodcroft Market Plaza, 217 Pimpala Road W  
08 8381 6000



Scale in metres. This drawing is for illustration purposes only. All measurements are approximate and details intended to be relied upon should be independently verified. Produced by **The Fotobase Group**